



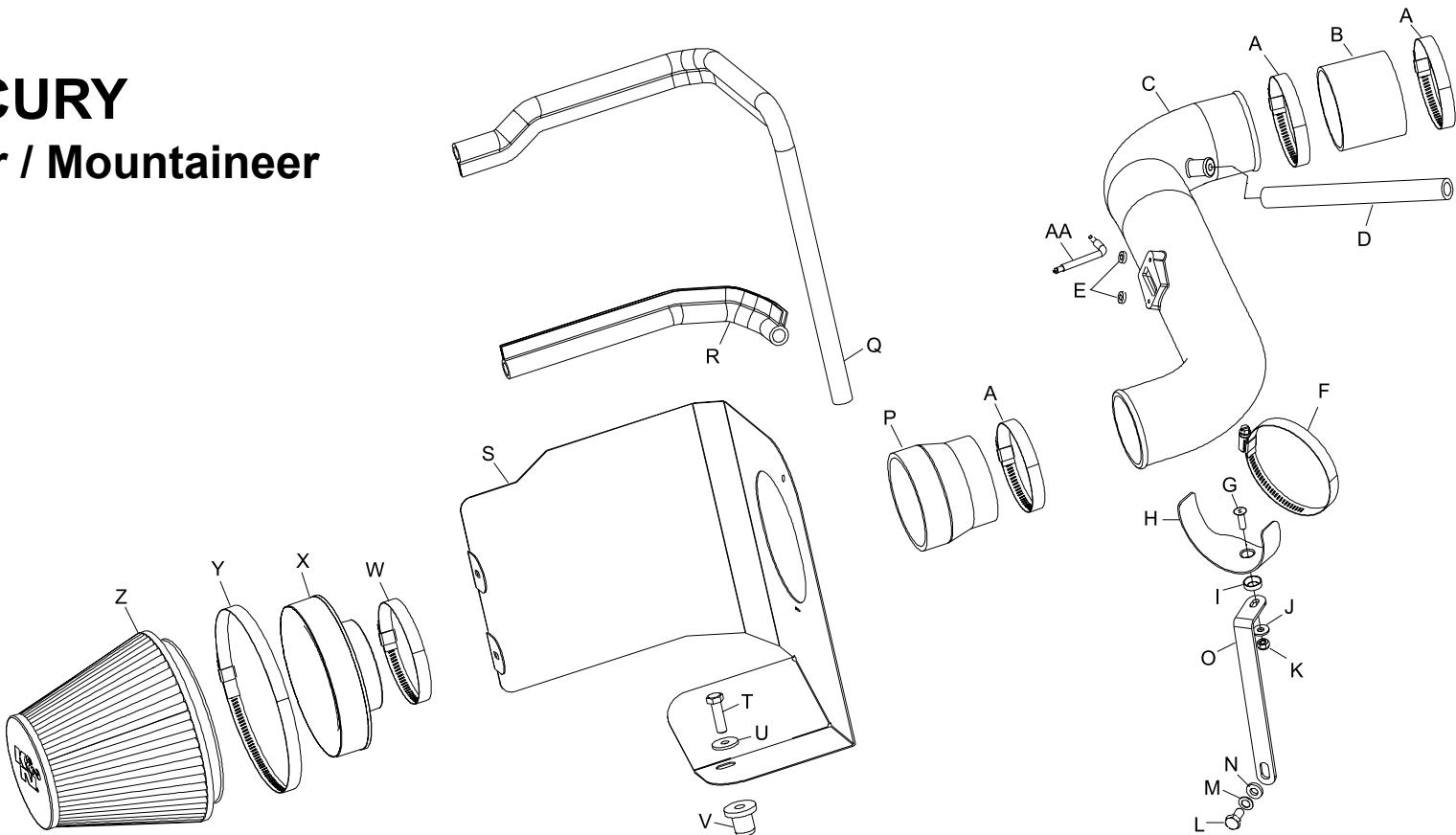
INSTALLATION INSTRUCTIONS

57-2564 FORD / MERCURY 2004-05 Explorer / Mountaineer V8-4.6L

NOTE: This kit was not designed to fit vehicles with a body lift.

TOOLS NEEDED:

- Flat Blade Screw Driver
- Ratchet
- Extension
- 10mm Socket
- 9/16" Socket
- 10mm Wrench
- 13mm Wrench
- 4mm Allen



PARTS LIST:

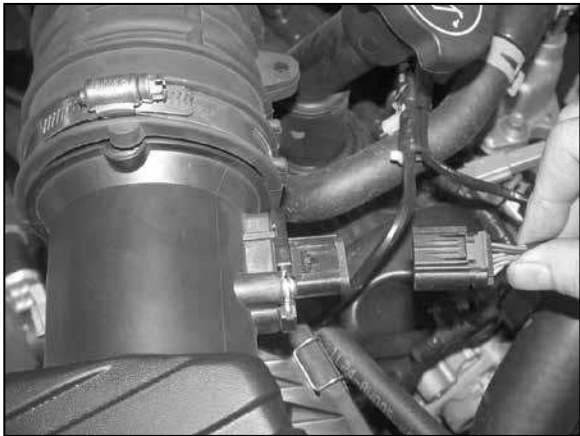
Description	Qty.	Part #	Description	Qty.	Part #	Description	Qty.	Part #
A Hose clamp; #48	3	08601	J Washer; 1/4" id X 5/8" od	1	08275	S heat shield	1	074034
B 3" X 2.5"L silicone hose	1	08192	K Nut; 6mm nylock	1	07553	T Bolt; 3/8"-16 X 1.25"L, hex	1	07779
C intake tube (ER)	1	087159	L Bolt; 8mm-1.25 X 16mm	1	07844	U Washer; 3/8" id flat washer	1	08134
D 1/2" X 8"L silicone hose	1	08535	M Washer; 8mm wave	1	08239	V Inserted nut; 3/8"-16	1	08163
E Spacer; white nylon	2	06503	N Washer; 5/16" id X 5/8" od	1	08276	W Hose clamp; #56	1	08620
F Hose clamp; #44	1	08577	O Bracket; "L"	1	010095	X adapter #380	1	21512
G Bolt; 6mm-1.00 X 20mm	1	08376	P 3.5 id x 3" tprd silicone	1	08724	Y Hose clamp #104	1	08697
H Saddle clamp	1	078855	Q edge trim 34"	1	102471	Z filter charger	1	RF-1048
I Washer; conical, black	1	08180	R edge trim 14"	1	102474	AA Wrench; T20 "TORX"	1	69801

NOTE: FAILURE TO FOLLOW INSTALLATION INSTRUCTIONS AND NOT USING THE PROVIDED HARDWARE MAY DAMAGE THE INTAKE TUBE, THROTTLE BODY AND ENGINE.

TO START:

1. Turn off the ignition and disconnect the negative battery cable.

NOTE: Disconnecting the negative battery cable erases pre-programmed electronic memories. Write down all memory settings before disconnecting the negative battery cable. Some radios will require an anti-theft code to be entered after the battery is reconnected. The anti-theft code is typically supplied with your owner's manual. In the event your vehicles' anti-theft code cannot be recovered, contact an authorized dealership to obtain your vehicles anti-theft code.



2. Depress the red locking tab and then disconnect the mass air sensor electrical connection.



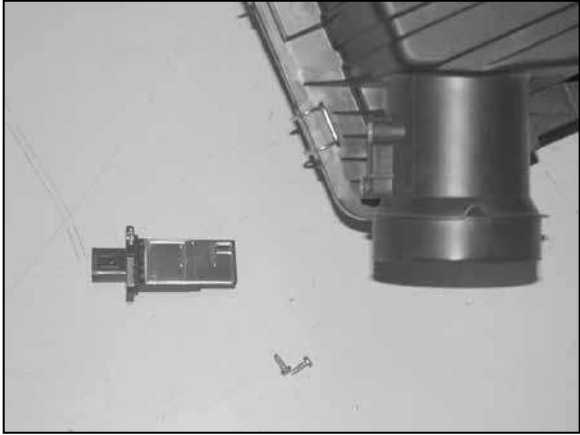
3. Release the green locking tab and then disconnect the crank case vent from the stock intake tube.



4. Loosen the hose clamps at the throttle body and the air box, and then remove the stock intake tube as shown.



5. Using a screwdriver, pry up the bottom of the air cleaner to release the air cleaner from the mounting grommets, and then remove the air cleaner assembly as shown. NOTE: K&N Engineering, Inc., recommends that customers do not discard factory air intake.



6. Using the "TORX" L key provided, remove the two screws, which retain the mass air sensor to the air box then remove the sensor as shown.



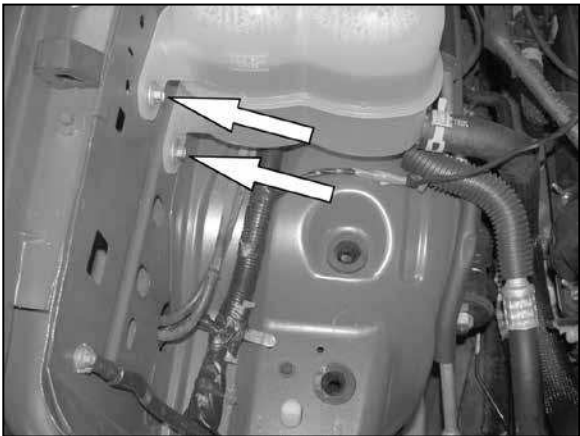
7. Assemble the tube mounting bracket (010095) and saddle clamp as shown.



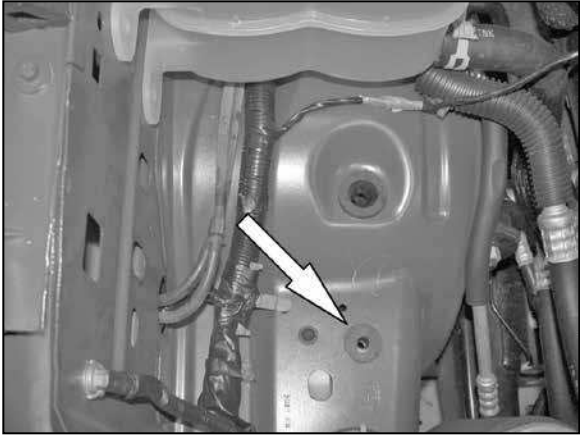
8. Using the 8mm bolt washers supplied, attach the tube mounting bracket assembly to the front of the engine at the threaded boss above the belt tensioner as shown.



9. Install the edge trim seal onto the heat shield as shown.
NOTE: Some trimming of the edge trim may be necessary.



10. Remove the two-coolant bottle mounting bolts and the forward air box retaining grommet shown.



11. Install the inserted nut into the forward air box mounting grommet hole vacated in step #10 as shown.



12. Install the heat shield as shown and attach to the inner fender with the factory coolant bottle mounting bolts and the 3/8" bolt and washer provided.



13. Install the silicone hose (08192) onto the throttle body and secure with the provided hose clamp as shown.



14. Install the mass air sensor into the K&N® intake tube and secure with the factory screws and spacers provided.



15. Install the K&N® intake into the silicone hose at the throttle body and onto the saddle clamp, then secure with the provided hose clamp.



16. Cut the factory crank case vent tube one inch from the end, then attach the supplied silicone vent hose to the K&N® intake tube and factory vent tube as shown.



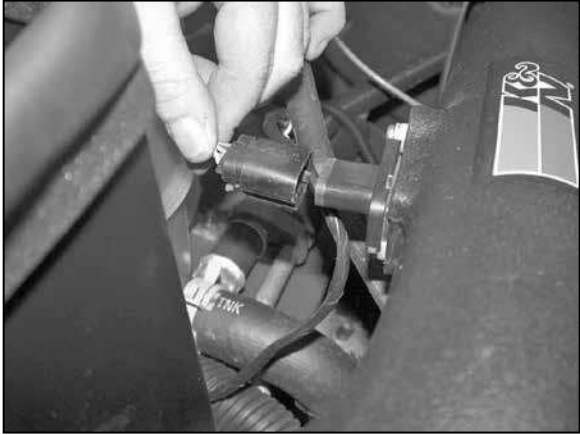
17. Install the filter adapter into filtercharger as shown and secure with the provided hose clamp.
NOTE: Drycharger® air filter wrap; part # RF-1048DK is available to purchase separately. To learn more about Drycharger® filter wraps or look up color availability please visit <http://www.knfilters.com>®.



18. Install the silicone hose (08724) onto the filtercharger assembly and secure with the provided hose clamp as shown.



19. Install the filtercharger assembly onto the K&N® intake tube and secure with the provided hose clamp as shown.
NOTE: Be sure to check to proper clearance around the filtercharger after installation.



20. Reconnect the mass air sensor electrical connection.



21. Reconnect the vehicle's negative battery cable. Double check to make sure everything is tight and properly positioned before starting the vehicle.

22. The C.A.R.B. exemption sticker, (attached), must be visible under the hood so that an emissions inspector can see it when the vehicle is required to be tested for emissions. California requires testing every two years, other states may vary.

23. It will be necessary for all K&N® high flow intake systems to be checked periodically for realignment, clearance and tightening of all connections. Failure to follow the above instructions or proper maintenance may void warranty.

ROAD TESTING:

1. Start the engine with the transmission in neutral or park, and the parking brake engaged. Listen for air leaks or odd noises. For air leaks secure hoses and connections. For odd noises, find cause and repair before proceeding. This kit will function identically to the factory system except for being louder and much more responsive.
2. Test drive the vehicle. Listen for odd noises or rattles and fix as necessary.
3. If road test is fine, you can now enjoy the added power and performance from your kit.
4. K&N Engineering, Inc., requires cleaning the intake system's air filter element every 100,000 miles. When used in dusty or off-road environments, our filters will require cleaning more often. We recommend that you visually inspect your filter once every 25,000 miles to determine if the screen is still visible. When the screen is no longer visible some place on the filter element, it is time to clean it. To clean and re-oil, purchase our filter Recharger® service kit, part number 99-5050 or 99-5000 and follow the easy instructions.

50-STATE STREET LEGAL

 CARB EXEMPT 

* FREE K&N® decal To register your warranty, please see us online at knfilters.com/register. FREE K&N® decal *