



INSTALLATION INSTRUCTIONS

Part Number BM-2605

This filter fits: All K model BMW motorcycles

FREE K&N DECAL** To register your warranty, please see us online at knfilters.com/register. **FREE K&N DECAL

Congratulations, you have purchased the finest air filter that money can buy. With proper care, this filter will last many years. This filter is a direct replacement for the stock air filter, and no modifications will be required. However the following procedure MUST be followed to ensure a proper fit and seal of the K&N Filtercharger®.

INSTALLATION

- 1) Follow the instructions in the service manual on replacing the air filter.
- 2) Arrange the filter so that the molded-in arrow points up and is towards the front of the bike. This will assure that the tiny air bubbles in the filter will be on the dirty side of the airbox and will not allow dirt to enter the clean side of the air box. Now slide the pre-oiled K&N filter in between the two halves of the airbox, using the grooves in the filter to locate the lid properly.
- 3) Pushing on the edges of the filter, slide the filter one inch past being flush, this is necessary to allow the airbox to fall into the groove in the filter that runs around the filter. See figure #1.
- 4) Now pull the filter back until the back edge seats on the airbox halves. The front edge should still remain inside the airbox. Do not pull it too far or the filter may not seat properly. See figure #2.
- 5) now take a small straight bladed screwdriver and work the front edges of the filter out of the airbox. See figure #3.
- 6) Wiggle the lid slightly to seat it and close the clips. Re-install the intake hose onto the airbox base.

THESE INSTRUCTIONS MUST BE FOLLOWED EVERY TIME THE FILTER IS SERVICED, OTHERWISE THE FILTER MAY NOT SEAL, AND DAMAGE TO THE ENGINE COULD RESULT.

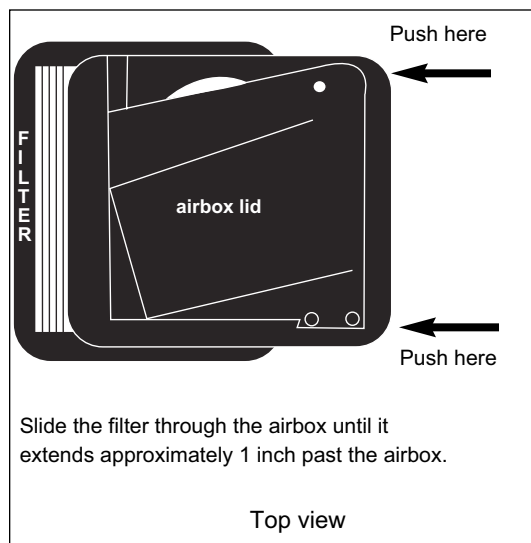


Fig. 1

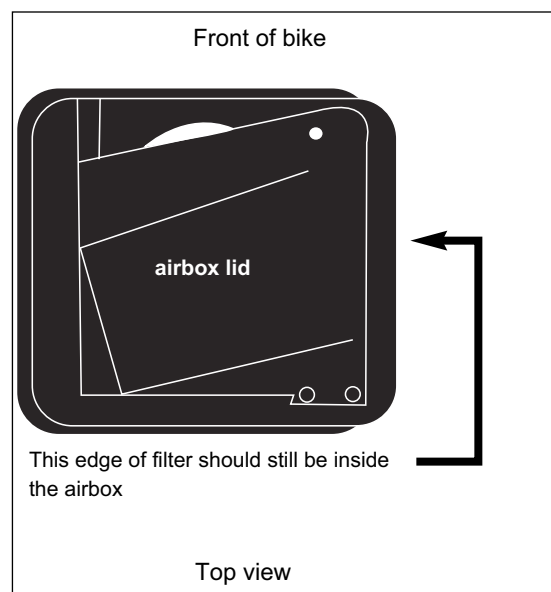
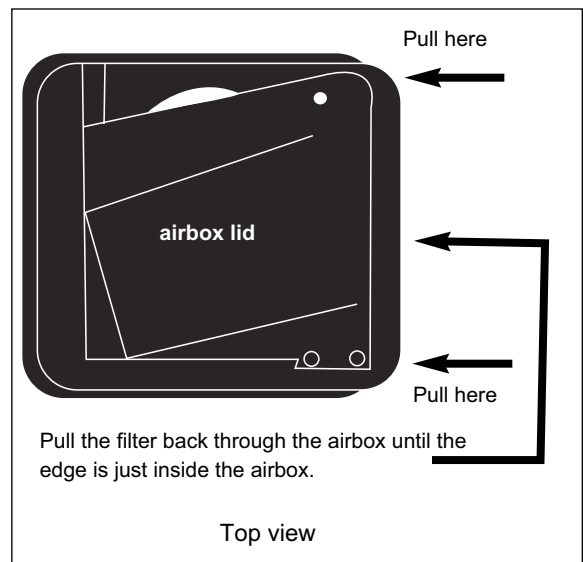


Fig. 2

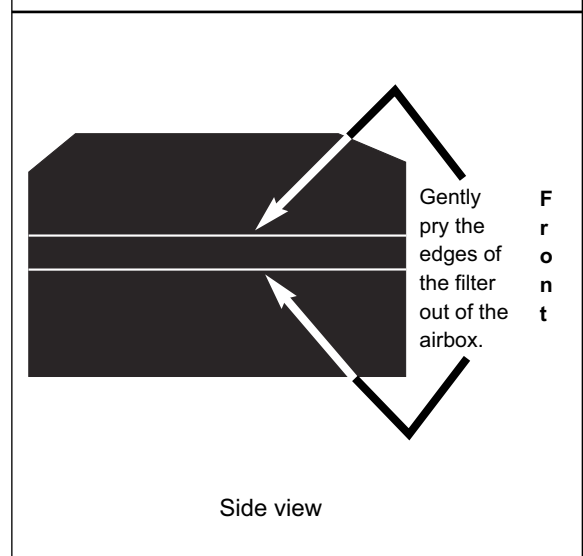


Fig. 3