

20182

**02-06 CADILLAC
ESCALADE &
EXT & ESV**



20182

**02-06 CADILLAC
ESCALADE &
EXT & ESV**

02-06 Cadillac Escalade, Escalade ESV & EXT Models **With Polished Logo Plate (Welded to billet)**

Tools Required:

Phillip Screw Driver
Dremel or Die Grinder w/ Cut-Off Wheel
Drill and 3/16" Drill Bit
Files and Sandpaper
Vise Grips or Clamps (6)
10mm Socket

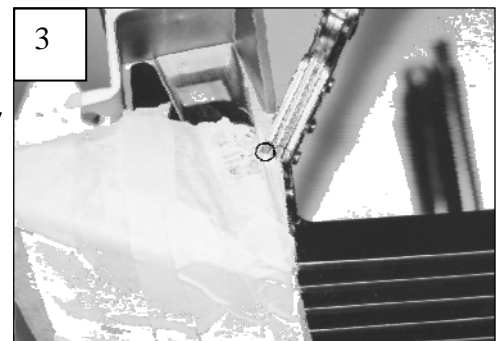
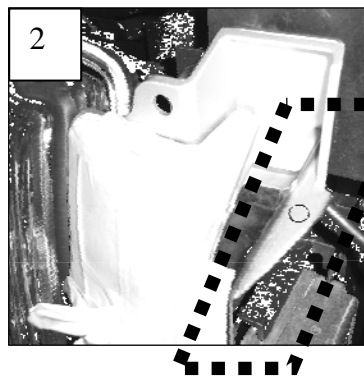
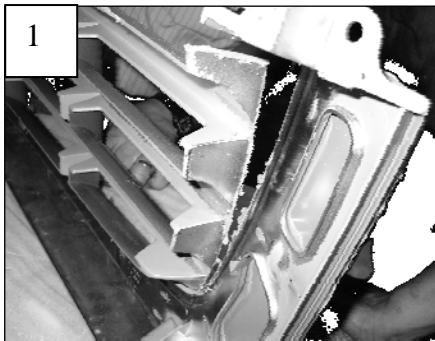
Parts List:

1 Billet Insert (27 Bars)
6 #8 x 3/4 Phillip Screws
6 #8 Flat Nuts
1 #10 x 1 Phillip Screw & Flat Nut
1 1/4-20 x 3/4 Bolt, Washer & Nut
1 "L" Extension Bracket

Read and understand instructions before attempting installation

Step 1

Remove the black cover attached to the top of the grille. Remove the 10mm bolt in the center. Unfasten the two clips securing the grille in each corner. Apply masking tape to the painted surfaces of the grille.



Step 2

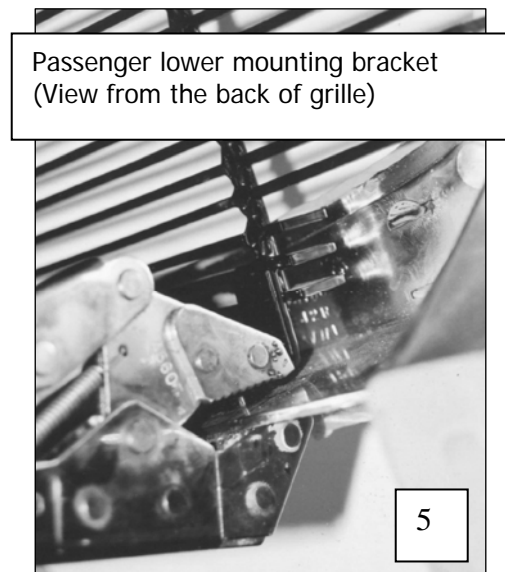
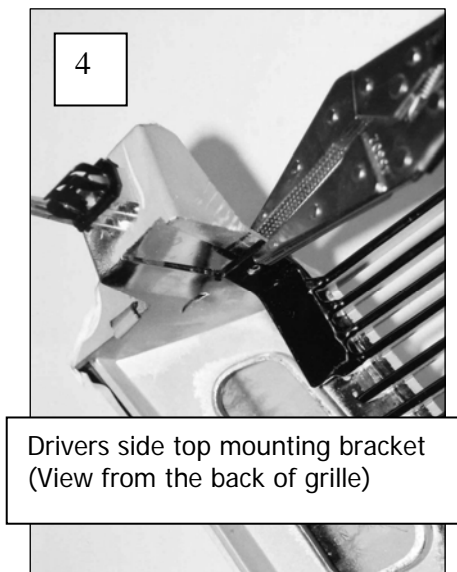
Cut the center out of the grille shell (1); leave additional material in each corner near the mounting clips in each top corner (2). The material is needed to secure the upper mounting tabs (3). Make your cut about 1/16" – 1/8" inside the chrome ring; this will leave a small plastic border inside of the opening. Remember it is better to cut less than cut too much. Clean your cut with sandpaper or files so there is a smooth edge around the opening.

Step3

Center the grille behind the chrome ring. Bend the brackets on the grille so they sit flat against the grille shell (4 & 5). Failure to do this may cause excessive gap between the billet and grille shell.

Use vise grips to clamp the grille to the grille shell (4 & 5). There should be a minimal gap (1/16" to 1/8") between the chrome ring and the face of the billet insert. If there is major gap, adjust the brackets and firmly press the insert forward to the chrome ring; re-clamp with vise grips.

Once you have the correct fitment of the grille; drill the mounting holes. Drill a 3/16" hole through the shell at each mounting hole. Fasten the billet to the grill shell using the #8 screws and flat nuts.



Step4

Install the grille shell back on the vehicle. Attach the extension bracket to the top of the billet with the 1/4"x 20 bolt, nut and washer. Use the #10 screw and flat nut to fasten the extension bracket to the header panel. Re-install the plastic cover on top. Use a heat gun (a hair drier will work) on the back of the factory emblem. Heat it enough so the tape is warm and pliable, at this time the emblem will peel off by prying with even pressure. Install the factory grille emblems. You can also use new double sided tape if the tape is torn during removal. ***Thank you for purchasing a T-Rex billet grille. 4/24/06***

