

20433

11-13

Chrysler 300C



20433

11-13

Chrysler 300C

11-13 CHRYSLER 300C

Billet Grille

Install time: 30 Mins.

TOOLS REQUIRED:

Plastic Prybar
10mm & 7mm Socket Wrench
3/16 Drillbit & Drill
Screwdriver

PARTS LIST:

(1) Billet Grille
(7) #8 Flat Nuts
(7) 3/4 #8 Screws

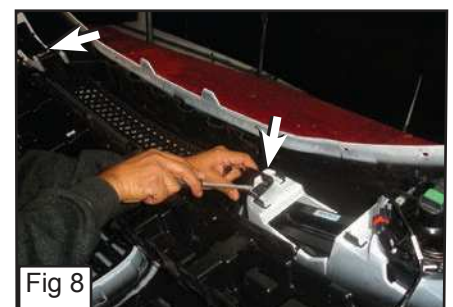
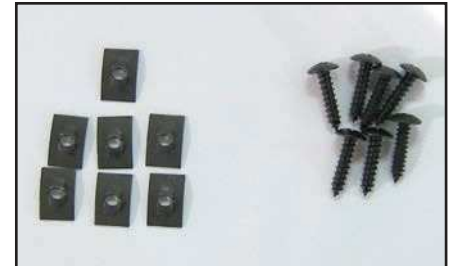
PLEASE READ AND UNDERSTAND ALL INSTRUCTIONS BEFORE ATTEMPTING INSTALLATION.

Step 1 Factory Grille Shell Removal

- Remove 8 clips on the Plastic Cover. (Fig. 1)
- Carefully pull on Grille Shell to remove part of the Plastic Cover. (Fig. 2)
- With a Plastic Prybar Unclip the Plastic Cover from the Factory Grille Shell. (Fig. 3)
- Remove Plastic Cover. (Pull Grille Shell Carefully outward if Plastic Cover doesnt come off.)
- Remove 2 clips on side Fender Well. (Fig. 4)
- Remove 10mm Bolt on the inner Fender. (Fig. 5)
- Pull Side Fender outward to Unclip. (Fig. 6)
- Remove 8 (7mm) Screws from Underneath the Factory Grille Shell. (Fig. 7)
- Remove Grille Shell and unclip the Electric Wire from the Fog Lights.

Step 2 Factory Grille Removal

- Remove 2 Clips on the Bumper Support. (Fig. 8)



20433

11-13

Chrysler 300C



20433

11-13

Chrysler 300C

11-13 CHRYSLER 300C

Billet Grille

- Remove 2 Screws on the corners of the Grille Shell. (Fig. 9)
- Remove 11 Clips around the Grille Shell. (Fig. 10)
- Remove Factory Grille. (grille will come out forward.)

Step 3 Grille Installation

- Unclip the Factory Grille from around the Chrome Frame. (Fig. 11)
- Place Billet Grille over the Chrome Frame. (Fig. 12)
- Securely hold in place the Bracket and Chrome Frame. (Fig. 13)
- Drill a 3/16 Hole through the Brackets around the Billet Grille. (Fig. 14)
- Place a #8 Flat Nut on the inner edge on the bracket and thread with a #8 Screw. (Fig. 15)

Re-Insert Billet Grille back into the Factory Grille Shell.

Re-Assemble Bumper Support, Clips and bolts.

Installation Complete



Fig 9

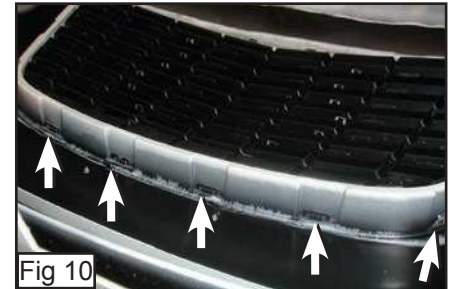


Fig 10



Fig 11



Fig 12

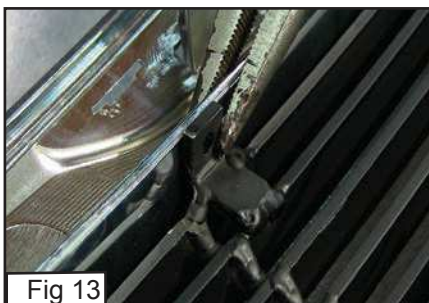


Fig 13



Fig 14

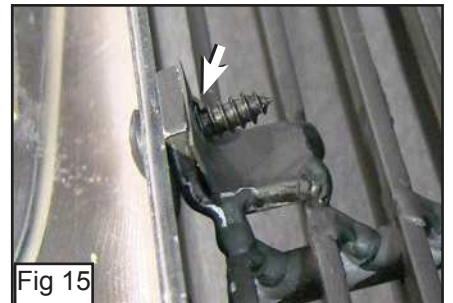


Fig 15