



INSTALLATION INSTRUCTIONS

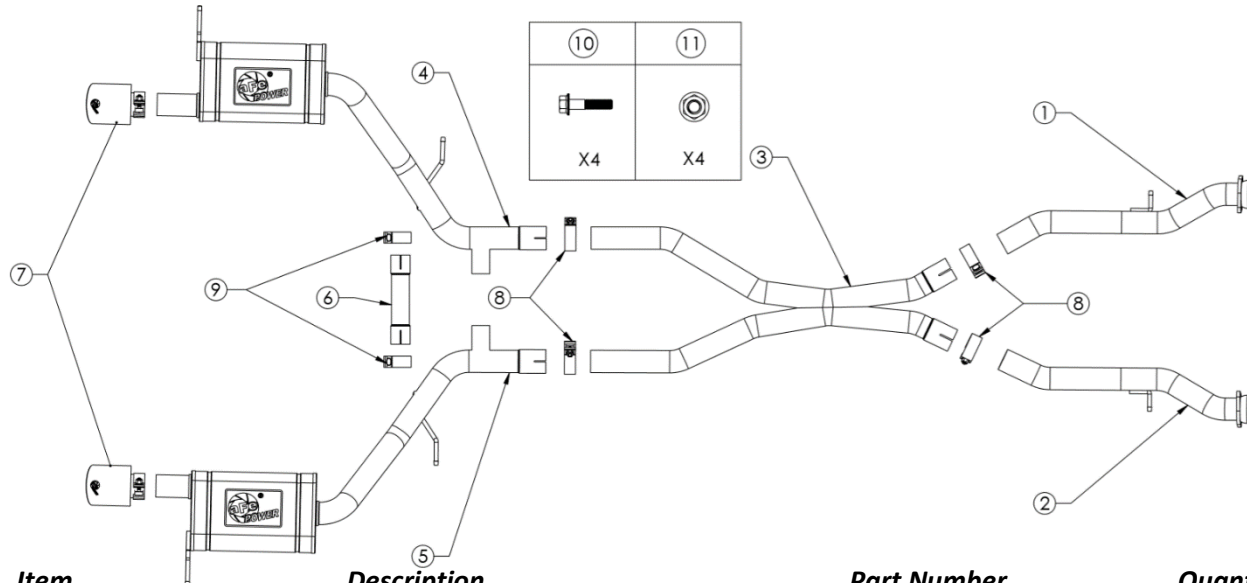
MAKE: Dodge
MODEL: Durango
YEAR: 2011-2022
ENGINE: V6-3.6L & V8-5.7L

Cat/Axle/Turbo-Back Exhaust

49-32086-B

49-32086-P

NOTE: ONLY FITS DUAL EXIT



Item	Description	Part Number	Quantity
1	Driver Side Front Pipe Assembly	05-245327	1
2	Passenger Side Front Pipe Assembly	05-245328	1
3	X-Pipe Assembly	05-245329	1
4	Driver Side Muffler Assembly	05-245330	1
5	Passenger Side Muffler Assembly	05-245331	2
6	Cross Over Tube	05-245332	1
7	EXH Tip 2-1/2 In x 4-1/2 Out x 7L Bolt-On Blk	49T25454-B071	2
7	EXH Tip 2-1/2 In x 4-1/2 Out x 7L Bolt-On Pol	49T25454-P071	2
8	Clamp, Band: 2-1/2"	05-41061	4
9	Clamp, Band: 2"	05-41235	2
10	Screw, Flanged Hex Cap 7/16-14 x 2-1/2	05-50208	4
11	Nut, Flange 7/16 – 14	05-50209	4

aFe POWER recommends professional installation on this product. Thoroughly inspect the aFe POWER exhaust system to make sure there is no damage from shipping (if damage is noted, immediately contact aFe POWER customer service). Allow time for your vehicle to cool down prior to installation. When working on your vehicle proceed with caution. Wear protective safety equipment; eye goggles and gloves to ensure a safe installation.

Install band clamps to proper torque specifications of 40-45 ft-lb.





INSTALLATION INSTRUCTIONS

MAKE: Dodge
MODEL: Durango
YEAR: 2011-2022
ENGINE: V6-3.6L & V8-5.7L

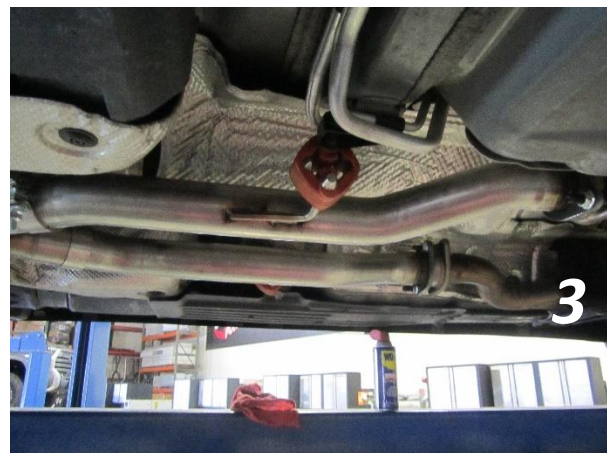
Cat/Axle/Turbo-Back Exhaust

49-32086-B

49-32086-P

NOTE: ONLY FITS DUAL EXIT

1. **(Read instructions prior to installation.)** It is recommended to not fully tighten the exhaust until it has been fully installed. Leave loose for adjustability.
2. Secure vehicle on jack stands (refer to your manual for specified jack stand positions).
3. For faster installation, spread out the parts of the exhaust alongside your vehicle as shown in the diagram above.
4. Secure the stock exhaust with jack/stands.
5. Remove the O.E. nuts and bolts at the driver side rear flange and slide driver side muffler exhaust off the isolation mount.
6. Remove the ground cable from the passenger side rear exhaust hanger.
7. Remove the O.E. spring nuts and bolts at the front flanges and slide the O.E. exhaust system off the isolation mounts.
8. Loosely assembly the complete exhaust system before installing onto the vehicle.
9. Start with the X-Pipe Assembly. Locate the badge welded to the right (passenger) side of the exhaust system. (see image 2)
10. Using the provided 2-1/2" Band Clamps install the Driver and Passenger Side Front Pipe Assemblies onto X-Pipe Assembly. The Exhaust hangers on the Front Pipe Assemblies will be on the lower portion of the exhaust pipe when properly installed. (see image 3)
11. Slide the provided 2" Band Clamp over the ends of the Cross Over Tube and slide the Cross Over Tube onto the Driver and Passenger Side Muffler Assemblies. Clamp hardware should be on the rear side out the crossover tube, with nuts pointed downward.
12. Using the provided 2-1/2" Band Clamps install the Driver and Passenger Side Muffler Assemblies onto the X-Pipe.
13. Loosely tighten all clamps and install the complete exhaust system onto the vehicle as a single unit.
14. Using the provided screws (x4) and nuts (x4) install the Driver and Passenger Side Front Pipe Assembly to the O.E. flanges, re-connect the ground strap to the exhaust/
15. Install exhaust tips onto the muffler assemblies and adjust the tips to the desired location and orientation.
16. Ensure that all the components of the aFe POWER exhaust system are aligned and are at a safe clearance from all wires, hoses, brake lines, body parts, and tires.
17. Start from the front of the aFe POWER exhaust system and evenly tighten all clamps and fasteners.
18. Start the vehicle and check for any leaks. If any leaks are found, determine cause and repair as necessary.
19. Remove vehicle from jacks stands.
20. It is recommended to re-tighten all clamps and hardware after 50-100 miles.





INSTALLATION INSTRUCTIONS

MAKE: Dodge
MODEL: Durango
YEAR: 2011-2022
ENGINE: V6-3.6L & V8-5.7L

Cat/Axle/Turbo-Back Exhaust

49-32086-B

49-32086-P

NOTE: ONLY FITS DUAL EXIT