

5150 Eucalyptus Avenue Unit A
Chino, Ca. 91710
888.360.3696
www.anzousa.com

2012-2014 Tacoma



Completely read all the instructions before installation
Improper installation will void warranty!

Step 1



Tools needed: 10mm Socket

Step 4



Remove the plastic piece carefully by unclipping it and pulling it towards the grill located

Step 7



Remove the headlight

Step 10

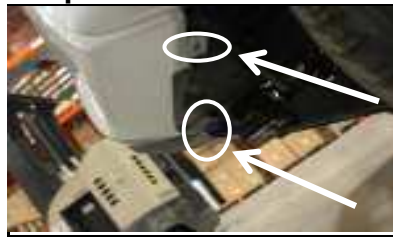


Step 2



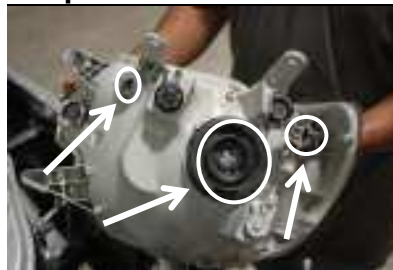
Remove 4 bolts located on top of the grill

Step 5



Remove 2 bolts located on each side in the bottom of the bumper

Step 8

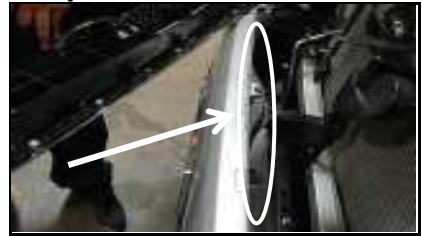


Once the headlight is out remove the turn signal harness, the parking lights harness and the low/high beam light harness

Step 11

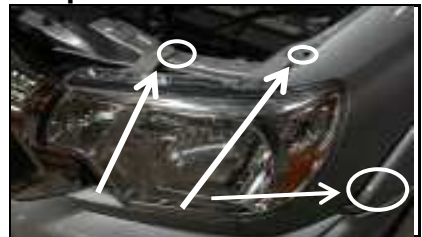


Step 3



Unclipe the grill carefully from the bumper

Step 6



Remove 2 bolts located on top of the headlight and 1 bolt located

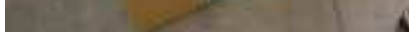
Step 9




Remove plastic peice located on the side of the headlight

Step 12






Install the plastic peice removed
from step 9



Insatll the headlight by reversing
step 8 and step 7



Test all functions before operating
the vehicle

information. Damage due to improper installation or road hazards is not covered. Seller and manufacturers' only obligations shall be to replace the product proven to be defective. Neither seller nor manufacturer shall be liable for any injury, loss or damage, direct or consequential, arising out of the use of or the inability to use the product. Before using, user shall determine the suitability of the product for its intended use, and user assumes all risk and liability whatsoever in connection therewith.

© 2008 AnzoUSA™. All rights reserved.