



SERVICE

For service send your product to Auto Meter in a well packed shipping carton. Please include a note explaining what the problem is along with your phone number. If you are sending product back for Warranty adjustment, you must include a copy (or original) of your sales receipt from the place of purchase.

12 MONTH LIMITED WARRANTY

Auto Meter Products, Inc. warrants to the consumer that all Auto Meter High Performance products will be free from defects in material and workmanship for a period of twelve (12) months from date of the original purchase. Products that fail within this 12 month warranty period will be repaired or replaced at Auto Meter's option to the consumer, when it is determined by Auto Meter Products, Inc. that the product failed due to defects in material or workmanship. This warranty is limited to the repair or replacement of parts in the Auto Meter instruments. In no event shall this warranty exceed the original purchase price of the Auto Meter instruments nor shall Auto Meter Products, Inc. be responsible for special, incidental or consequential damages or costs incurred due to the failure of this product. Warranty claims to Auto Meter must be transportation prepaid and accompanied with dated proof of purchase. This warranty applies only to the original purchaser of product and is non-transferable. All implied warranties shall be limited in duration to the said 12 month warranty period. Breaking the instrument seal, improper use or installation, accident, water damage, abuse, unauthorized repairs or alterations voids this warranty. Auto Meter Products, Inc. disclaims any liability for consequential damages due to breach of any written or implied warranty on all products manufactured by Auto Meter.

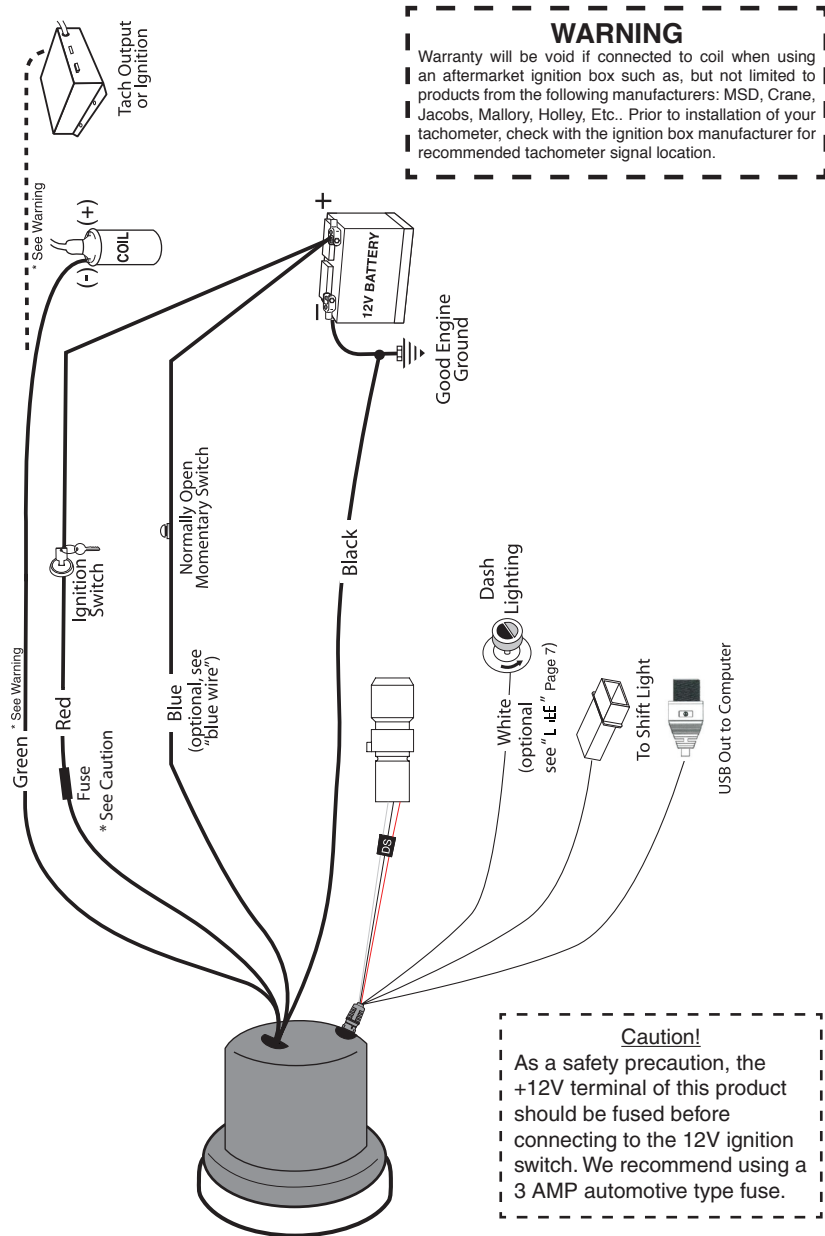
FOR SERVICE SEND TO: AUTO METER PRODUCTS, INC.

413 W. Elm St., Sycamore, IL 60178 USA (866) 248-6357

Email us at service@autometer.com

Thank you for purchasing the Auto Meter Ultimate III Tachometer. This is one of the most advanced tachs we've made in over 50 years of building the world's finest performance instruments. The Ultimate III allows for simultaneous recording of both your engine and driveshaft RPM to provide you with a very clear picture of how your vehicle gets down the track. This guide will walk you through the installation of your tach and familiarize you with its functions and operations.

Wiring Your Ultimate III



Blue Wire

In some cases, the driver will not be able to reach the tach buttons once they're strapped in the vehicle. In these instances, a normally open momentary switch can be installed on the blue wire and the 12v power source. This will allow the driver to remotely arm the tach to record. The process of "arming" the tach is explained in the RECORD section of the instructions. Additionally, this switch can be used to change the channel on the display. Per NHRA rules, the blue wire cannot be connected to the transbrake. The tach will not function if this is done.

dLPC (Download to a PC or Laptop)

- Connect the USB cable (not included) between the tach and the PC.
- Using the Up (▲) and Down (▼) Arrow to select **dLPC** and then press Enter (■). Start the DataPro Software included with the Tach. Click on the Recorder Menu and select Playback Tach Download or press F9.
- Click on the Download button. The display on the Ultimate III will show **DL** while data is being transferred. This should take about 5 seconds. Then the display will show **DL done** to indicate the download process is complete.
- Press (X) to exit the download mode.

Optional Magnet Collars

- 9387 - 1.875" I.D. Four Magnet Collar
- 9388 - 2.125" I.D. Four Magnet Collar
- 9389 - 1.49" I.D. Machineable Four Magnet Collar

Optional Shift Lights

- 5329 - Chrome Quick-Lite
- 5330 - Black Quick-Lite
- 5331 - Silver Quick-Lite
- 5328 - Mini LED Shift-Lite
- 5332 - Black Super-Lite
- 5333 - Silver Super-Lite

Drive Shaft Magnet Installation

NOTE: An aluminum collar is available for most models to hold the magnets. Please call Auto Meter Products for further information.

Although it is possible to install magnets without removing the four universal joint bearing caps that are attached to the differential pinion end yoke; it is highly recommended that they be removed. This allows for a better job of cleaning surfaces, and applying the J-B Weld brand adhesive.

Caution: Use J-B Weld brand adhesive only. Many other brands were tested, and only J-B Weld withstands the centrifugal forces encountered.

1. Remove the U-bolts or straps that retain the universal joint bearing caps to the end yoke on the differential.
2. Slide the driveshaft forward into the transmission while being careful not to allow the bearing caps to fall off the universal joint.
3. Gently slide the two bearing caps that were contained by the end yoke off of the universal joint cross. Be careful not to lose any of the needle bearings.
4. Place needle bearings in a safe place until ready to reassemble.
5. Clean any surface rust (etc.) from bearing cap end with a wire brush attached to a bench grinder or drill.
6. Using the 80-grit emery paper supplied, roughen up the end of the bearing cap to improve J-B Weld adhesion.
7. Using the sharp edge of a file, scratch the yellow end of the magnets so that the end can be identified after the paint is removed during cleaning of the magnets. (See Figure 1)

NOTE: The magnet is painted yellow on one end to identify the south side. The sensor supplied will only work with the end of the magnet.

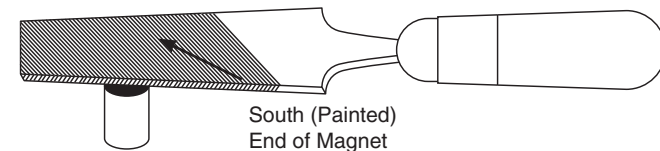


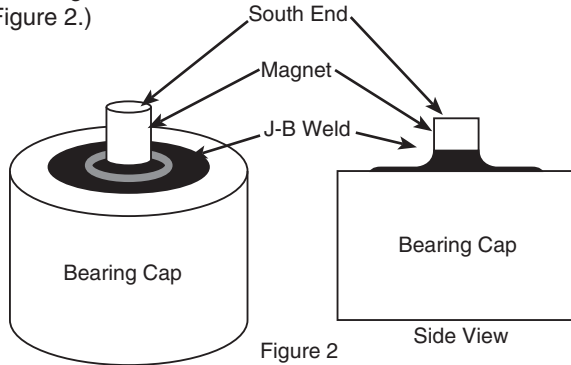
Figure 1

8. Using a CLEAN rag, apply acetone or lacquer thinner to the rag. Wipe the bearing cap ends and magnets clean. Allow the cleaner to evaporate.

NOTE: The surfaces must be clean, and free of all residues to provide a strong bond with the J-B Weld.

9. J-B Weld consists of two parts. Squeeze equal parts from each tube onto any clean disposable surface. Mix together thoroughly with the wooden stick provided.

10. Apply a small amount of J-B Weld onto the end of the bearing cap. With the south side of the magnet facing away from the J-B Weld and bearing cap, place the magnet in the center of the J-B Weld on the bearing cap as shown. (See Figure 2.)



11. Tear off a thin piece of paper, and place it onto the 5/8" diameter steel slug. Place the paper and slug onto the south end of the magnets as shown. (See Figure 3.)

NOTE: Since J-B Weld has steel in it, the J-B Weld will be attracted to the south end of the magnet, and will flow away from where its needed most. The steel slug placed on the south end of the magnet prevents this from happening. The paper prevents bonding of the steel slug to the magnet.

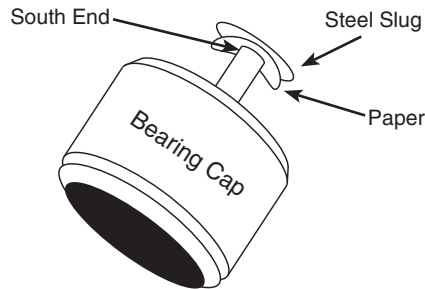


Figure 3

12. Apply a liberal amount of J-B Weld to form a cone shape as shown. (See Figure 4.)

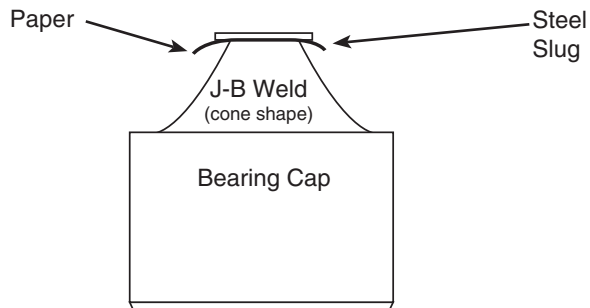


Figure 4

REC - (Record A Run)

This is the menu you use when you are ready to record a run. There are two ways to trigger a recording, either by using the buttons or by remote triggering along the blue wire.

To record a run using the buttons on the tach:

When you are in Record mode, press the Enter (■) Key and the display will show r-d. This can be done at any time prior to your run. Press the Enter (■) Key again, and the display will change to R-r-d. Your recording will automatically begin when your engine RPM reaches the threshold you set earlier (See L-r-E). The recording will then run for 60 seconds. You don't need to press anything to stop it and the run will automatically be saved, even if you shut down the vehicle.

To record a run using the blue remote trigger wire.

Just like when using the buttons on the tach, press Enter (■) on the Record mode and the tach will display r-d. This can be done at any time prior to your run. Instead of Pressing Enter (■) to "arm" the tach, you can use a normally open momentary push button on the blue wire to apply 12V. Hold the button for at least one second and release it. Once that 12V is taken away, the tach will move to R-r-d. Your recording will automatically begin when engine RPM reaches the threshold you set earlier (See L-r-E). The recording will then run for 60 seconds. You don't need to press anything to stop it and the run will automatically be saved, even if you shut down the vehicle.

Pb - (Playback Run)

Pressing Enter (■) under the Playback menu will allow you to play back your run on the tach itself. You can have up to 4 different runs stored on the tach at one point in time. You can move between them using the P-U menu item. You can switch between Engine or Driveshaft RPM on the display using the P-b-h menu item.

PbSd - (Playback Speed)

When playing back a run, you can play it at full speed (real time), 1/2 speed or 1/3 speed. Simply use the Up (▲) and Down (▼) Arrows to select the speed you want and press Enter (■) to save. You can also press Cancel (X) to back out without making a change.

TACH - (Normal Tach Mode)

This is your normal operating mode. When Tach is selected, the pointer will display the current engine RPM and the shift light will always come on when the RPM reaches the first shift point (see **SESP** section for more information). This is the default setting for the Ultimate III and will always come up when the unit is powered up.

PbCh - (Playback Display Channel)

This setting allows you to change which reading is shown on the tach's digital display during normal operation and during playback (when a run is played back on the tach). Press Enter (■) to begin. Using the Up (▲) and Down (▼) Arrows, you can select between Engine RPM or Driveshaft RPM. Press (■) to confirm your selection or press (X) to exit without saving changes. Please note that due to NHRA rules, Driveshaft RPM cannot be viewed while the tach is recording. The display will go blank during your run.

PbPl - (Playback on Pointer)

When playing a run back on the tach itself, you can watch either the Engine or Driveshaft RPM. This option allows you to select between the two. Please note that the tach will always display Engine RPM under normal operation, regardless of your setting here. Press Enter (■) to start & use the Up (▲) and Down (▼) arrows to select between the two. Press Enter (■) to save or Cancel (X) to exit without making a change.

RUN - (Set Run)

The Ultimate DL can record 4 separate 60 second runs. Pressing Enter (■) on this setting will allow you to select different runs using the Up (▲) and Down (▼) Arrows. Once you've selected the run you want to use, press Enter (■) to save or Cancel (X) to back out without making a change. The tach will always stay on the run you currently have selected and will simply overwrite the existing run if you record a new one and there is one stored in memory. As an example, RUN 4 cannot be affected if you have RUN 1 selected. Making two recordings on RUN 1 will automatically erase/overwrite the data from the earlier run.

13. Allow the J-B Weld to cure for 24 hours before putting into use. J-B Weld cures slower if used at temperatures below 60°F. After J-B Weld has cured for 6 hours, a heat lamp or light bulb placed near the weld will speed up curing time in cooler temperatures. Do not apply heat before 6 hours of room temperature curing, as this may cause the weld to become brittle.

NOTE: In hot weather, let the J-B Weld set-up for about 15 to 20 minutes after mixing, this lets it thicken and prevents running or sagging.

14. After J-B Weld has cured, remove the steel slugs and paper. Make sure that no J-B Weld protrudes above the magnets, if so a file may be carefully used to remove the excess. Also be sure that the J-B Weld does not interfere with the bearing cap retainer tang on the end yoke.
15. Assemble the bearing caps. Use an approved grease to hold the needle bearings in the bearing caps. Make sure there are no missing needle bearings. Place the bearing caps onto universal joint cross.
16. Reassemble the driveshaft and universal joint to the end yoke. Replace the U-bolts or straps, and torque to the manufacture specifications. When magnets are mounted according to these instructions, the magnets will withstand at least 10,000 RPM. A collar is recommended for cars 10 seconds and faster.

Sensor Mounting for Driveshaft RPM Pickup

A bracket must be fabricated to hold the sensor near the magnets that were installed on the universal joint bearing caps. The bracket must be very rigid, as not to allow the sensor to come in contact with the magnets under extreme vibration. If the sensor touches the magnets they will break off, and also possibly damage the sensor. We recommend using rigid channel steel for the bracket. The bracket should be bolted directly to the differential case. This insures a constant sensor to magnet clearance with any suspension travel. Mount the sensor through a 7/16" diameter hole in the bracket. Adjust the sensor to magnet clearance to .200" +/- .030", and lock down the jam nuts supplied on the sensor. Verify the clearance is correct for all magnets. (See Figure 5.)

Optional: Driveshaft collars are available direct from Auto Meter for many performance applications. (See page 10 for details)

NOTE: Strange Ultra Case requires a 5/16-24 x 1.5" sensor. Contact Auto Meter at 866-248-6356 for pricing and availability of optional sensor.

Rotate the driveshaft by hand to make sure there is adequate clearance between the bracket and sensor assembly and the differential pinion end yoke. (See Figure 6.) Tie the wires away from any moving objects and hot exhaust pipes.

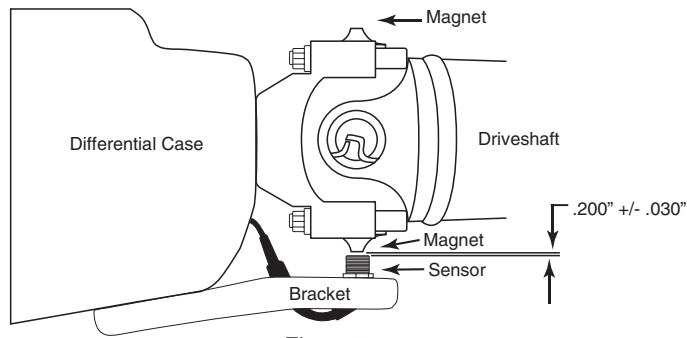


Figure 5

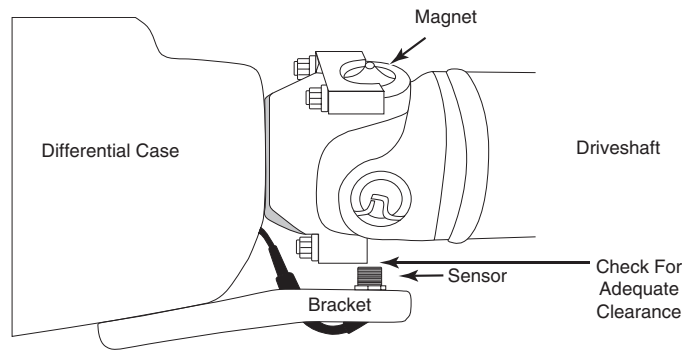
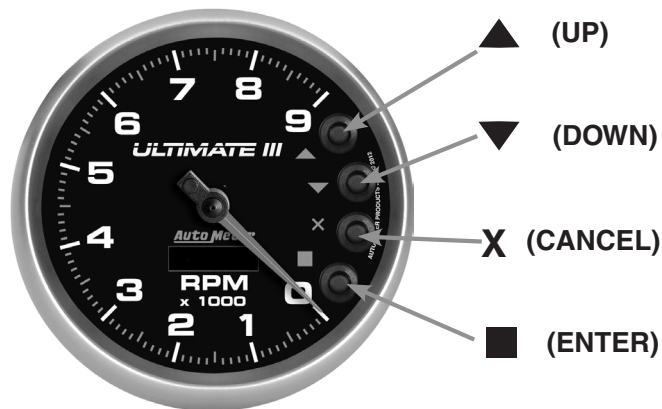


Figure 6

Moving Through The Menus

The Ultimate III's functions are broken up in a series of menus. Navigating these menus is accomplished using the four push buttons on the right side of the tach. The buttons functions are:



Setting Up Your Tach

Here we'll set up your tach. Most of these steps will only need to be done once, but can be changed at any time. Use the Up (▲) and Down Arrows (▼), scroll through the menu options and press the Enter (■) Button to enter that setting. Cancel (X) will always back up one step without saving changes.

PPR - (Pulse Per Revolution – Engine Cylinder Calibration)

This is the menu you use to tell the tach how many ignition pulses it sees for each revolution of the crank. On most engines, this number will be 1/2 the number of cylinders the engine has because only half of the cylinders are fired on each revolution of the crank. For example, a typical V8 engine will be set to 4.0 PPR. To set your PPR, go to the Set PPR mode and press Enter (■). Using the Up (▲) and Down (▼) Arrows you can adjust your PPR setting between .5 and 6 pulses per revolution. Once you've found the setting you need, press the Enter Button (■) to save that setting. You can also press Cancel (X) to back out of the menu without making a change. If the PPR settings are programmed incorrectly, the tach will still function but will display the incorrect RPM.

SESP - (Set Shift Points)

This sets the rpm levels for the four stage shift light. Press Enter (■). The display will show SP I. Press the Up (▲) and Down (▼) Arrows to change the selected shift point. Press Enter (■) to review or change the rpm of the selected shift point. Press Up the (▲) and Down (▼) Arrows to change the rpm of the selected shift point. Press Enter (■) to save the new setting, or press Cancel (X) to exit without changing the setting. Press the Up (▲) and Down (▼) Arrows to change to the next shift point or press Cancel (X) to exit Set Shift Points.

LITE - (Set Backlighting Mode):

Press Enter (■) to see what the current mode is, ON or ADJ. Selecting ADJ makes the backlight intensity proportional to the voltage on the white wire. This should be connected to dash lighting. Selecting ON sets the backlight intensity to a constant level. Press the Up (▲) or Down (▼) Arrows to change the mode. Press Enter (■) when desired mode is displayed. If ON is selected, the display will show a backlighting level of 0-10, 0 is off, 10 is maximum brightness. Press the Up (▲) or Down (▼) Arrows to change the fixed level. Press (■) to save the new level or press (X) to exit without changing the level.

THR - (RPM Threshold)

The Ultimate III uses your engine RPM to know when to start recording your run. When your engine reaches a certain RPM, the tach knows you're about to launch and starts recording. The THR setting is where you configure this. Press the Enter (■) button to display the threshold RPM. Move the RPM to the desired RPM by using the Up (▲) and Down (▼) Arrows. Once you've reached the desired RPM to start your recording, press Enter (■) to save the setting. You can also press Cancel (X) to back out without making a change.