



2650-1694-00

# INSTALLATION INSTRUCTIONS JEEP JK TRIPLE GAUGE POD 2007 TO 2010



Included,  
AD1-0008,  
ALCOHOL PREP  
PAD, 2 pcs

## STEP 1 – PRIOR TO INSTALLATION

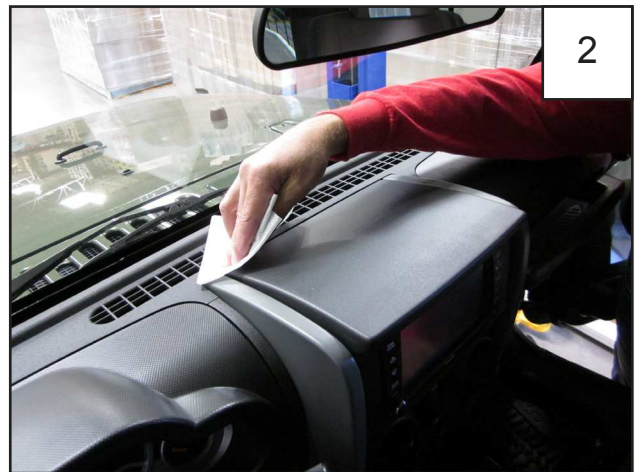
- A) **Gauges must be installed in the triple gauge pod prior to installation.**
- B) Auto Meter only approves installing the triple gauge pod according to these written instructions with the hardware provided. **WARNING:** Failure to install according to these instructions will void the warranty. This includes, but is not limited to using alternative installation methods, hardware, or materials. **DO NOT USE:** Loctite, SuperGlue, or similar products on the hardware.
- C) **Fit:** Verify the fit of the triple gauge pod. (Some filing, sanding, or cutting may be necessary to ensure proper fit).
- D) **Painting:** (Optional) if paint is desired it must be done prior to installing triple gauge pod on dash. Clean outer surface with a good grade degreaser. **DO NOT USE LACQUER THINNER OR ENAMEL REDUCER AS A DEGREASER.** Wipe outer surface thoroughly with a tack rag prior to paint. Application of plastic adhesion promoter for TPO plastic as per your paint system manufacturer's recommendations is required. Paint triple gauge pod using a high quality enamel, or polyurethane automotive paint.

## Jeep JK Triple Gauge Pod Installation Procedures

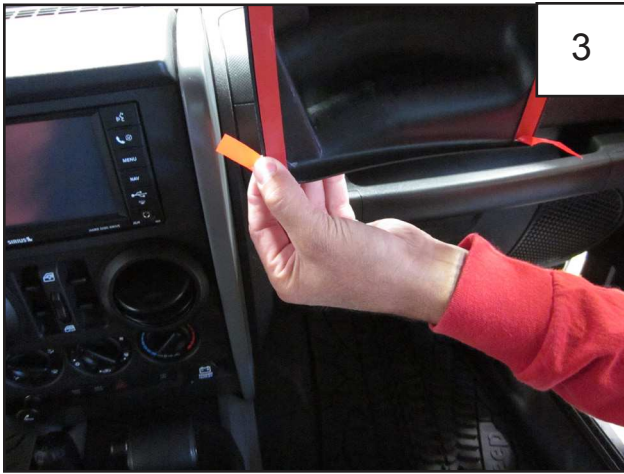


Clean all dirt and debris from dash. Dry fit the pod on the dash, and determine how you will run your gauge wiring. This pod can be used with or without gauge brackets. If no brackets are used, you can leave the gauges out until the pod is mounted, however wiring must already be in place and easily reachable. If you chose to use gauge brackets must already be mounted and wired before mounting the pod.

**Note:** Before permanently securing gauge pod to the dash it is recommended that gauges be tested to ensure they are functioning properly.



Using the supplied alcohol wipe, clean area where part will be placed. **NOTE:** Temperature should be between 60°F and 110°F for proper tape adhesion.



**Gauges must be installed in the triple gauge pod prior to installation.** Before placing the part on the vehicle, take the tabs for the line of 1/2" tape on the front and back of the part and fold it out as shown.



It is recommended that you align the part on the dash an equal distance between the front and the back edges. **NOTE: Alignment between front and back edges is adjustable based on customer discretion.**



Pull liner of lower 1/2" tape strip. Press down on entire length of the part again applying firm pressure to the taped areas. **NOTE: The tape reaches maximum adhesive bond after 24 hours of contact.**



Apply firm pressure for 30 seconds on each section of the part to ensure proper adhesion.

---

### SERVICE

For service send your product to Auto Meter in a well packed shipping carton. Please include a note explaining what the problem is along with your phone number. If you are sending product back for Warranty adjustment, you must include a copy (or original) of your sales receipt from the place of purchase.

---

### 12 MONTH LIMITED WARRANTY

Auto Meter Products, Inc. warrants to the consumer that all Auto Meter High Performance products will be free from defects in material and workmanship for a period of twelve (12) months from date of the original purchase. Products that fail within this 12 month warranty period will be repaired or replaced at Auto Meter's option to the consumer, when it is determined by Auto Meter Products, Inc. that the product failed due to defects in material or workmanship. This warranty is limited to the repair or replacement of parts in the Auto Meter instruments. In no event shall this warranty exceed the original purchase price of the Auto Meter instruments nor shall Auto Meter Products, Inc. be responsible for special, incidental or consequential damages or costs incurred due to the failure of this product. Warranty claims to Auto Meter must be transportation prepaid and accompanied with dated proof of purchase. This warranty applies only to the original purchaser of product and is non-transferable. All implied warranties shall be limited in duration to the said 12 month warranty period. Breaking the instrument seal, improper use or installation, accident, water damage, abuse, unauthorized repairs or alterations voids this warranty. Auto Meter Products, Inc. disclaims any liability for consequential damages due to breach of any written or implied warranty on all products manufactured by Auto Meter.

---

**FOR SERVICE SEND TO: AUTO METER PRODUCTS, INC. 413 W. Elm St., Sycamore, IL 60178 USA (866) 248-6357**  
Email us at [service@autometer.com](mailto:service@autometer.com)