



INSTALLATION INSTRUCTIONS

1075 North Ave. Sanger, CA 93657-3539 local: 559-875 0222 fax: 559-876-2259 toll free: 800-445-3767

5488

Front Anti-Sway Bar 92-96 Impala, Roadmaster, Caprice

CONGRATULATIONS!

You were selective enough to choose a BELLTECH PRODUCT. We have spent many hours developing our line of products so that you will receive maximum performance with minimum difficulty during installation.

- Note: Confirm that all of the hardware listed in the parts list is in the kit. **DO NOT** begin this installation if any part is missing. Read the instructions thoroughly before beginning this installation.
- Warning:** **DO NOT** work under a vehicle supported by only a jack. Place support stands securely under the vehicle in the manufacturer's specified locations unless otherwise instructed.
- Warning:** **DO NOT** drive the vehicle until all work has been completed and checked. Torque all hardware to values specified.
- Reminder: Proper use of safety equipment and eye/face/hand protection is absolutely necessary when using these tools to perform procedures!
- Note: It is very helpful to have an assistant available during the installation process.
- Note: We **DO NOT RECOMMEND** using wheel ramps while performing this installation.

RECOMMENDED TOOLS:

- Properly rated floor jacks, support stands, and wheel chocks
- Combination wrench set
- Ratcheting socket wrench and socket sets
- Safety Glasses
- Air Ratchet

KIT INSTALLATION

1. Open the hardware kit and remove all of the contents. Refer to the parts list (Page 3) to verify that all parts are present.
2. Park the vehicle on a smooth, level concrete or seasoned asphalt surface and activate the parking brake. Block the REAR wheels of the vehicle with appropriate wheel chocks; making sure the vehicle's transmission is in 1st gear (manual) or "Park" (automatic).
3. Using a properly rated floor jack, lift the front wheels of the vehicle off the ground. Place support stands, rated for the vehicle's weight, and in the factory specified locations. Refer to the vehicle Owner's Manual. Prior to lowering the vehicle onto the stands, make sure the supports will securely contact the chassis!
4. It is very important that the vehicle is properly supported during this installation to prevent personal injury and chassis damage! Make sure that the supports stands are properly placed prior to performing the following procedures. We **DO NOT RECOMMEND** using wheel ramps while performing this installation.
5. Slowly lower the vehicle onto the stands and, before placing the vehicle's entire weight on them, again check that they properly and securely contact the chassis as described above. Check for possible interference with any lines, wires, cables, or other easily damaged components.

6. Remove the original front Anti-Sway Bar (ASB) and end links from the vehicle. The new Belltech Anti-Sway Bar (ASB) kit will replace the pivot bushings, and end links.
7. Thoroughly lubricate the inside of the new polyurethane bushings using the grease provided. Attach the bushings on the Belltech Anti-Sway Bar (ASB) so that they will align with the factory mounting locations. Use the factory Anti-Sway Bar (ASB) as reference. Once located, rotate the bushings slightly too evenly spread the lubricant.

WD-40™ is recommended to help remove excess lubricant. Re-greasing the pivot bushings should be performed at regular intervals. Climate and driving conditions will govern the time between services. Remember to check all hardware while performing bushing maintenance.

8. Install the new Belltech Anti-Sway Bar (ASB) onto chassis in the reverse order of removal. Align the slotted holes in brackets with their original mounting holes. Loosely thread the hardware into place.

! The bar should be installed so that the ends pass **ABOVE** the steering tie-rods. Shift the bar side-to-side and front-to-back to center on chassis. Be **cautious** not to damage brake lines while installing the anti-sway bar.
9. Using a 9/16" socket, tighten and torque the bracket hardware to 19 lb ft. A deep socket may be required to access the bolt on the backside of the pivot-bushing bracket.

All hardware being fastened to the vehicle's original fastening points should be torqued to the proper specifications. To prevent chassis damage, never over-torque the hardware.

10. Install the new end-links in the same orientation as the original. Install the bolts with the cupped washers and grommets from above so that the heads face up and the lock nuts will be located at the bottom. Thread the lock nuts on by hand. Use the 9/16" wrench and 9/16" socket to tighten the end-link hardware. Tighten only until the urethane end-link grommets just begin to bulge.
11. Check that all components and fasteners have been properly installed, tightened and torqued.
12. Check brake hoses, steering and other components for any possible interference.
13. Lift vehicle and remove support stands. Carefully lower vehicle to ground.
14. Immediately test-drive the vehicle in a remote location so that you can become accustomed to the revised driving characteristics and handling. Be aware that the vehicle will handle substantially different now that it has been modified.
15. Installation is complete. Check all of the hardware and re-torque at intervals for the first 10, 100, 1000 miles.

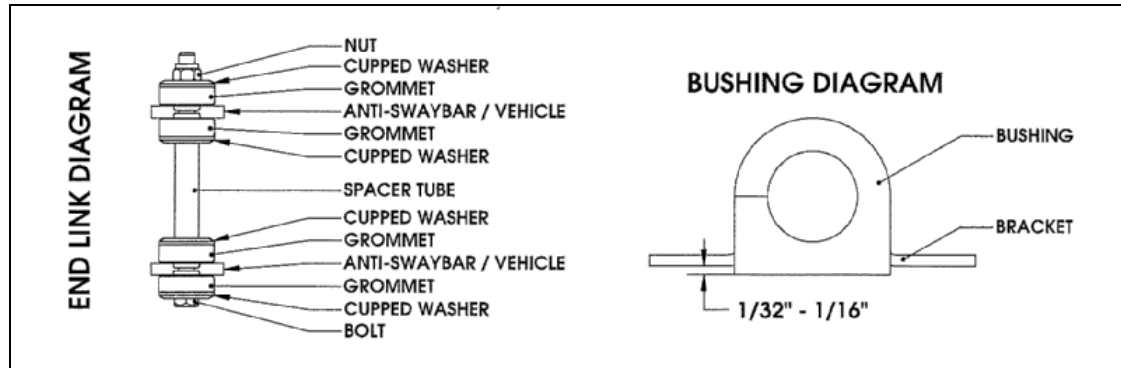
PART LIST FOR 5488 FRONT ANTI-SWAY BAR KIT

Part Number	Quantity	Description
50077-300	1	Anti-Sway Bar
50050-020	2	Urethane Pivot Bushing
113000	8	Urethane End-link Grommet
112502	8	Large Cup Washer 3/8"
112416	2	Spacer 3/8" X 2"
112134	2	Bolt 3/8"-16 X 6"
110255	2	Nylock Nut 3/8"-16
55000-10	1	Grease Pack

! BELLTECH INSTALLATION TIPS

LUBRICATION

Pre-lubricating the inside of the bushing before it's installed is important because the lubrication will greatly reduce noise and it will increase bushing life. Belltech recommends you use Molybdenum disulfide. This will help protect the inside surface of the bushing and will last longer than most types of grease. Thoroughly lubricate the inside of the bushing with this grease.



BUSHING INSTALLATION

Make sure an amount of $1/32''$ to $1/16''$ of the bushing is showing when you install it onto the bracket. See the diagram above. If the bushing is showing more than $1/16''$ than use a sander or a sheet of coarse grit sand paper to shave it down to the proper height. In most applications when installing the new bushings on your Belltech Anti-Sway Bar (ASB) you may refer to your original equipment Anti-Sway Bar to locate the proper location.

END LINK INSTALLATION

It is not required that you use lubricant on the end links since there is no rotational movement. The Belltech end links are comprised of grommets, cupped washers, a spacer tube, bolt, and lock nut, these assembled components create the end link. See END LINK DIAGRAM above.