

Jeep Wrangler Installation Guide PN-60595



******* Please compare the parts in the box with the bill of materials provided *****
(view the following pages) to assure that you have all the parts necessary for this installation.**

These instructions have been written to help you with the installation of your Borla Performance System. Please read this document completely before beginning the installation of your system.

To ensure this part number fits your specific model year, please visit our website for the latest model year listings at www.BORLA.com

Thank you for purchasing a Borla Performance Exhaust System.

Borla Performance Cat-Back™ Exhaust System (PN-60595) is designed for the Jeep Wrangler 4-door, equipped with a 3.6L V6 engine, 4WD automatic or manual transmissions. This system is designed to compliment Borla Cat-Back™ Exhaust Systems.

Borla Performance Industries recommends that an exhaust shop or professional after market parts installer, who has all the necessary equipment, tools and experienced personnel needed for proper installation, should perform the installation of this system. However, if you decide to perform the installation, we recommend someone should help you. Ensure the installer uses all under car safety precautions including eye protection.

Please take time to read and understand the following...

By installing your Borla Performance Exhaust System, you indicate that you have read this document and you agree with the terms stated below.

It is the responsibility of the purchaser to follow all installation instruction guidelines and safety procedures supplied with your Borla Performance Exhaust System.

Borla Performance Industries assumes no responsibility for damages occurring from misuse, abuse, improper installation, improper operation, lack of responsible care, or all previously stated reasons resulting from incompatibility with other manufacturer's products and/or systems.

Included with your Borla Performance Exhaust System is a warranty card. Please read it carefully before you begin any work on your vehicle. If you should have any questions regarding our warranty policy, installation, or any other matter pertaining to your new Borla Performance Exhaust System, please give us a call at the number provided on the warranty card.

Minimum Required Tool List:

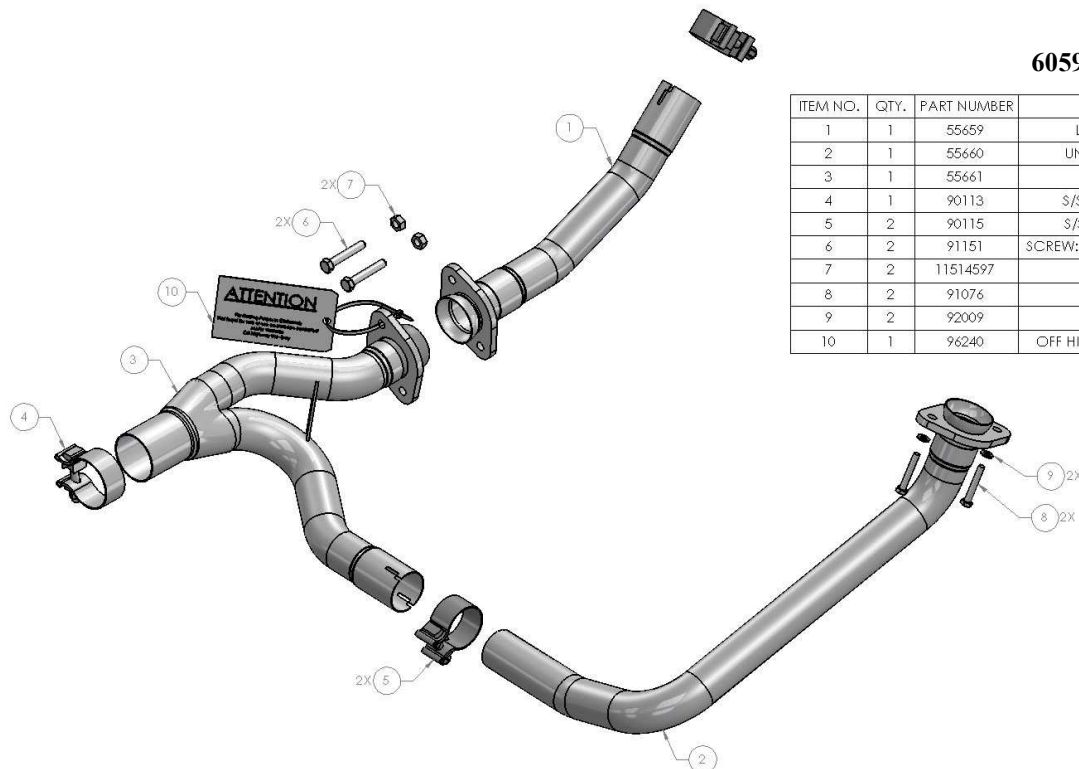
TOOLS:

1. 3/8" Drive Ratchet
2. 3/8" Drive Extension 3"
3. 18mm Socket
4. 17mm Socket
5. 15mm Socket
6. 13mm Socket
7. T-45 Torx
8. cutting blade saw
9. Pry Bar

SHOP SUPPLIES:

- 1 Spray Lubricant

Borla Performance - Bill of Materials



ITEM NO.	QTY.	PART NUMBER	DESCRIPTION
1	1	55659	L/H FRONT PIPE ASSEMBLY
2	1	55660	UNDER TRANS PIPE ASSEMBLY
3	1	55661	Y-PIPE ASSEMBLY
4	1	90113	S/S ACCUSEAL CLAMP Ø2.50
5	2	90115	S/S ACCUSEAL CLAMP Ø2.00
6	2	91151	SCREW: CAP, HXHD, M10 X 60mm, 1.50p
7	2	11514597	NUT: HXHD, M10 X 1.50p
8	2	91076	BOLT: M8 X 40MM
9	2	92009	WASHER: FLAT, M8
10	1	96240	OFF HIGHWAY USE ONLY DISCLAIMER

Caution!!! *Never work on a hot exhaust system. Serious injury in the form of burns can result. If the vehicle has been in use and the exhaust system is hot, allow vehicle to cool for at least 1 hour. Always wear eye protection when working under any vehicle.*

Note: *It is our recommendation that you use a hoist or hydraulic lift to facilitate the installation of your new Borla Performance Exhaust System.*

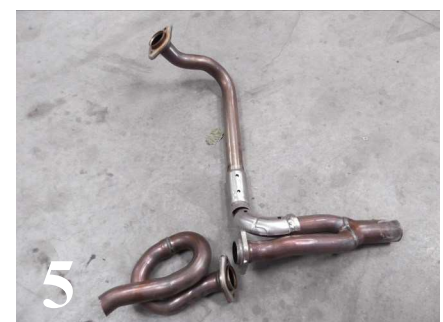
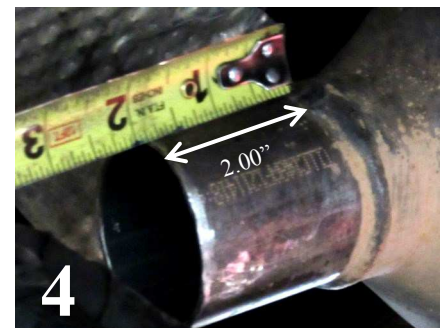
Taking all under car safety precautions, lift the vehicle using a hoist or hydraulic lift. Once this has been done, you may begin the removal of your old exhaust system from your vehicle.

Note: *Before removing the original exhaust system from your vehicle, please compare the parts you have received with the bill of materials provided on the previous page to assure that you have all the parts necessary for the installation of your new Borla Performance Exhaust System.*

Note: *With a used vehicle, we suggest a penetrating spray lubricant to be applied liberally to all exhaust fasteners and allowing a significant period of time for the chemical to lubricate the threads before attempting to disassemble.*

Original Exhaust System Removal

1. Loosen clamp on rear muffler assembly. Remove the two hangers located on the rubber brackets and remove this assembly from vehicle. (See Fig. 1)
2. Using a muffler stand or an additional person to hold the center muffler assembly into position.
3. Remove (4) bolts from the skid plate. Keep hardware for reinstallation later. (See Fig. 2)
4. Loosen clamp on front muffler assembly. Remove (2) hangers from the rubber isolators and this assembly from vehicle.
5. Loosen bolts and remove the chassis cross-member.
6. Remove (2) flange bolts and the under-transmission pipe assembly from vehicle. (See Fig. 3)
7. Measure and mark a 2" cutting line behind the driver side catalytic converter. Cut pipe using a metal-cutting blade saw. (See Fig. 4)
8. Stock down pipes system removed. (See Fig. 5)

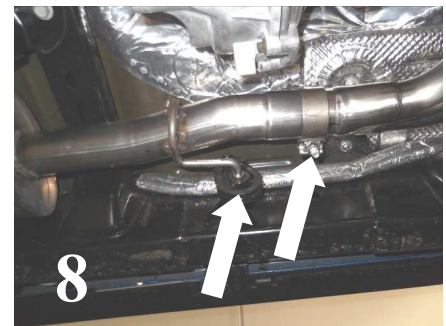
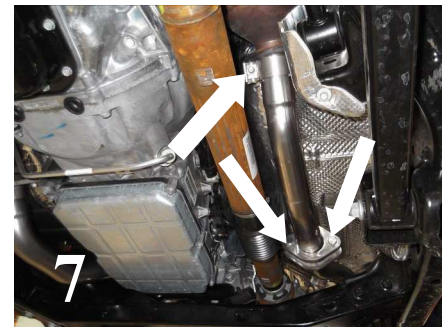
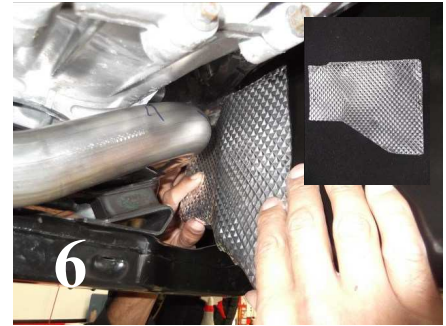


WARNING: *Use extreme caution during installation. Torque all fasteners according to manufacturer's torque values and tightening sequence. **DO NOT** use air impact tools to tighten fasteners on Borla Performance Exhaust Systems. Use of such tools may result in bent flanges or gasket contact areas leading to exhaust leaks.*

NOTE: *When you first start your vehicle after the installation of your new Borla Performance Exhaust System, there may be some smoke and fumes coming from the system. This is a protective oil based coating used in the manufacturing of mandrel bent performance exhaust tubing. This is not a problem and will disappear within a very short period of time after the exhaust has reached normal operating temperatures.*

Borla Performance Cat-Back™ Exhaust System Installation

1. Place the supplied **Heat Shield** on the gas tank. (See Fig. 6)
2. Place a clamp over the expanded end of **L/H Front Pipe Assembly** and place over newly cut pipe. (See Fig. 7) **DO NOT TIGHTEN CLAMP.**
3. Install **Under Trans Pipe Assembly** to right-side flange using supplied hardware, see page 2 for more references.
4. Place a clamp over the expanded end of the **Muffler Assembly** and insert to the outlet of the **Y-Pipe Assembly**. Insert the hanger into the rubber isolator. **DO NOT TIGHTEN CLAMP.** (See Fig. 8)
5. Place a clamp over expanded end of **Y-Pipe Assembly** and insert ends into **L/H Front Pipe** outlet and **Under Trans Pipe** outlet. **DO NOT TIGHTEN CLAMPS.** (See Fig. 9)
6. Reinstall the skid plate using the original hardware.
7. Refer to installation instructions installing your Borla Cat-Back™ Exhaust System.
8. Check your exhaust system for proper clearance under the vehicle. (See Fig. 10)
9. Once position has been determined to be correct, tighten the hardware at the flange securing the muffler assembly and the two clamps to 32-35ft. lbs.
10. **Before starting your vehicle, make sure to check all wires, hoses, brake lines, body parts and tires for safe clearance from the exhaust system.**
11. Start vehicle and check for any leaks. If any leaks are found, determine cause (such as loose or incorrectly positioned clamp) and repair as necessary.



WARNING: Use extreme caution during installation. Torque all fasteners according to manufacturer's torque values and tightening sequence. **DO NOT** use air impact tools to tighten fasteners on Borla Performance Exhaust Systems. Use of such tools may result in bent flanges or gasket contact areas leading to exhaust leaks.

NOTE: When you first start your vehicle after the installation of your new Borla Performance Exhaust System, there may be some smoke and fumes coming from the system. This is a protective oil based coating used in the manufacturing of mandrel bent performance exhaust tubing. This is not a problem and will disappear within a very short period of time after the exhaust has reached normal operating temperatures.