



13269

INSTALLATION INSTRUCTIONS



Safety glasses should be worn at all times while installing this product.

YEARS: 2015-PRESENT

MAKE: JEEP

MODEL: RENEGADE

STYLE: SUV



WARNING: NEVER EXCEED YOUR VEHICLE MANUFACTURER'S RECOMMENDED TOWING CAPACITY
For more information log onto www.curtmfg.com & for helpful towing tips log onto www.hitchinfo.com

WEIGHT CARRYING:

TRAILER WEIGHT: 3,500 LBS.
TONGUE WEIGHT: 525 LBS.

WARNING:

WE RECOMMEND THE USE OF 18050 STABILIZING STRAPS FOR ALL NON-TRAILER (WHEEL-LESS) LOADS. PLEASE SEE THE CURT CATALOG OR VISIT US ONLINE AT WWW.CURTMFG.COM FOR FURTHER INFORMATION.

PRO INSTALL TIME: 30 MIN.

NOVICE INSTALL TIME: 60 MIN.

IF YOU ARE HESITANT TO UNDERTAKE THIS TASK ON YOUR OWN, CONTACT AN AUTHORIZED CURT INSTALLER FOR ADDITIONAL ASSISTANCE.


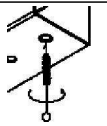
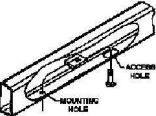


INSTALLATION REQUIRES:

	 3/4" 21mm	 8"
RATCHET	SOCKET	SOCKET EXTENSION
		
DIE GRINDER	TORQUE WRENCH	UTILITY KNIFE
		
UNIVERSAL JOINT SOCKET	OFFSET SCREWDRIVER	SAFETY GLASSES

INSTALLATION TIPS:

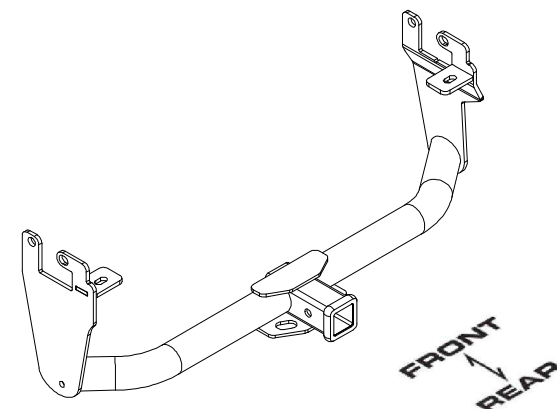
1. BEFORE YOU BEGIN INSTALLATION, READ ALL INSTRUCTIONS THOROUGHLY.
2. TO EASE INSTALLATION, 2 PEOPLE MAY BE REQUIRED.
3. USING PROPER TOOLS WILL GREATLY IMPROVE THE QUALITY OF THE INSTALL AND REDUCE THE TIME REQUIRED.
4. NEED HELP OR HAVE SOME QUESTIONS? CALL TECHNICAL SUPPORT AT 800.798.0813

LEVEL OF DIFFICULTY: MODERATE

EASY	MODERATE	CHALLENGING
	HOLE ENLARGEMENT REQUIRED	
	WELDNUT CLEANING	
	FISHWIRE	
	NO DRILL	
	REVERSE FISHWIRE	

VEHICLE PHOTO:

REPRESENTATIVE PHOTO

HITCH ILLUSTRATION:

MAKE SURE YOUR HITCH MATCHES



SCAN FOR
MORE INFO

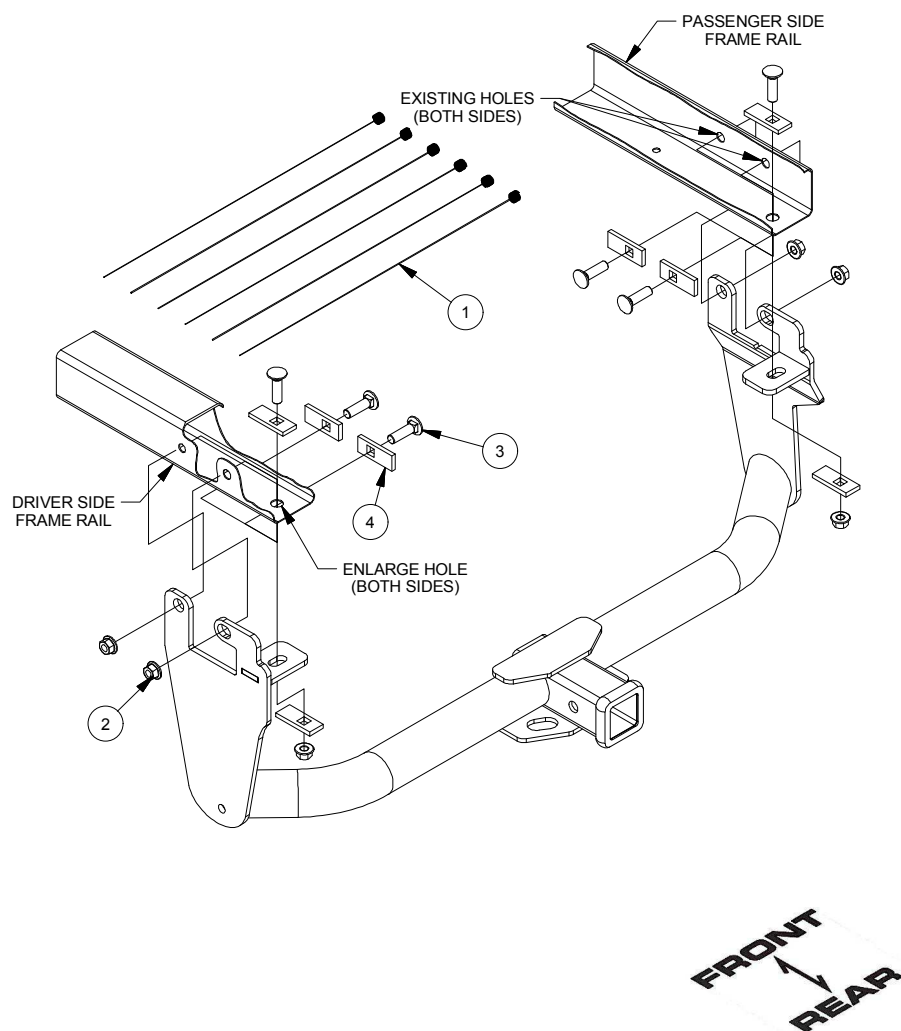
PERIODICALLY CHECK THIS RECEIVER HITCH TO ENSURE ALL FASTENERS ARE TIGHT AND ALL STRUCTURAL COMPONENTS ARE SOUND
CURT Manufacturing LLC. warrants this product to be free of defects in material and/or workmanship at the time of retail purchase by the original purchaser. If the product is found to be defective, CURT Manufacturing LLC. may repair or replace the product at their option, when the product is returned, prepaid, with proof of purchase. Alteration to, misuse of, or improper installation of this product voids the warranty. CURT Manufacturing LLC.'s liability is limited to repair or replacement of products found to be defective, and specifically excludes liability for incidental or consequential loss or damage.
For more information log onto www.curtmfg.com , & for helpful towing tips log onto www.hitchinfo.com

This product complies with safety specifications and requirements for connecting devices and towing systems of the state of New York, V.E.S.C.Regulation V-5 and SAE J684.

1/18/2016

INSTALLATION WALKTHROUGH:

Parts List			
ITEM	QTY	PART NUMBER	DESCRIPTION
1	6	1_2 FISHWIRE	1/2" FISHWIRE
2	6	HFN 1213, GR8	HEX FLANGE NUT
3	6	1/2-13 x 1 3/4, GR8	CARRIAGE BOLT
4	8	CM-SP10	.250 x 1.00 x 2.50" SQUARE HOLE SPACER

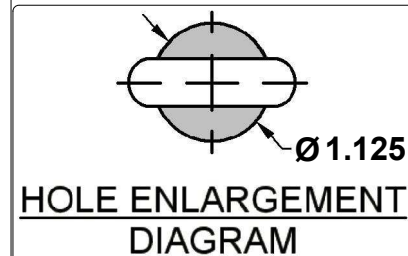


1. Remove (1) rubber plug on the bottom of each frame rail.
Remove (2) rubber plugs on the outside of each frame rail.

Trailhawk Models: Remove (3) M14 bolts on each frame rail using a 21mm socket and save for reinstallation. Skip to step 5.



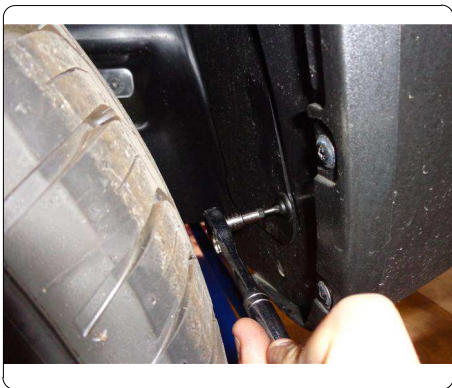
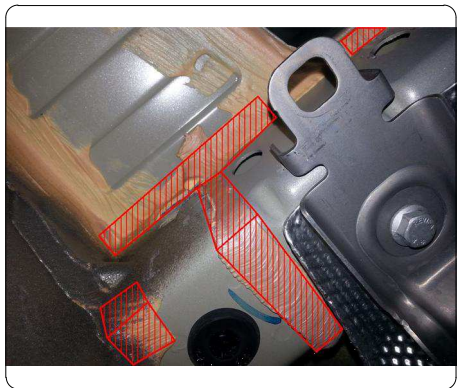
2. Enlarge the rearmost hole with a die grinder on each frame rail to allow the carriage bolts and spacers to be inserted into the frame rail.



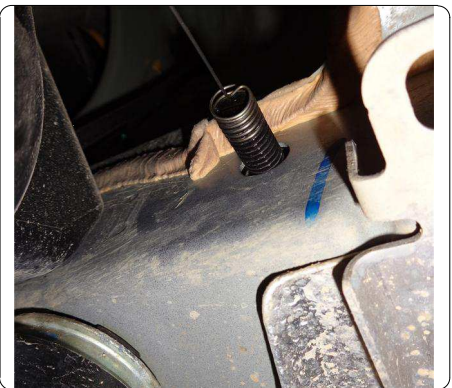
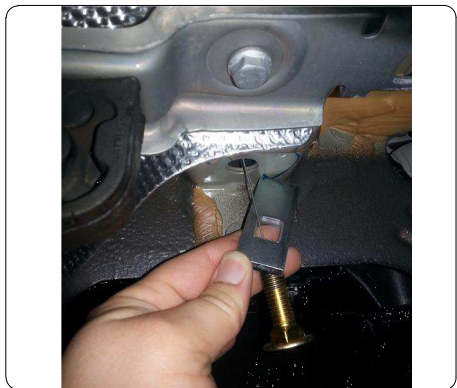
INSTALLATION WALKTHROUGH:

3. Clear away caulk as necessary near mounting holes using a utility knife. On the passenger side, remove (2) plastic screws retaining an access panel located in the wheel well using an offset phillips screwdriver. Save for reinstallation.

Note: Removal of the rear wheels may ease installation.

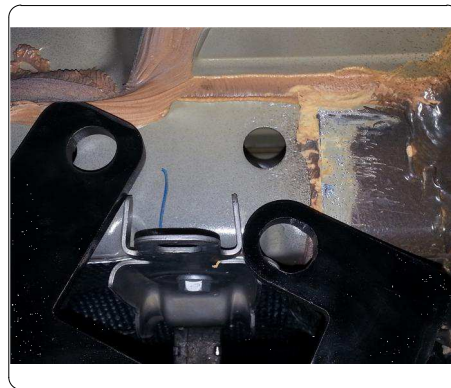


4. Fishwire (2) 1/2" carriage bolts and (2) CM-SP10's into the holes on the outside of each frame rail. Reverse Fishwire (1) 1/2" carriage bolt and (1) CM-SP10 into the hole on the bottom of each frame rail. Keep fishwires attached until hitch is raised into position.



5. Raise the hitch into position, thread the fishwires into the mounting holes. On the bottom attachments, place a CM-SP10 spacer on the bolt and loosely install all 1/2" hex flange nuts with a 3/4" socket.

Trailhawk Models: Raise hitch and loosely install factory M14 hardware removed in Step 1.



6. Torque all 1/2" hardware to 110 ft.-lbs or M14 hardware to 135 ft.-lbs. Reinstall access panel and plastic screws removed in Step 3.



TOWING SAFETY INFORMATION

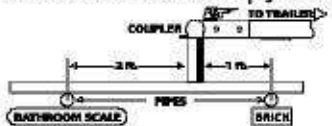
Gross Trailer Weight / GTW

The Gross Trailer Weight is the weight of the trailer & cargo. Measure this by putting the fully loaded trailer on a vehicle scale.



Tongue Weight / TW

The downward force that is exerted on the hitch ball by the coupler. The tongue weight will vary depending on where the load is positioned in relationship to the trailer axle(s). To measure the tongue weight, use either a commercial scale or a bathroom scale with the coupler at towing height. When using a bathroom scale with heavier tongue weights, use the method shown and multiply the scale reading by 3.

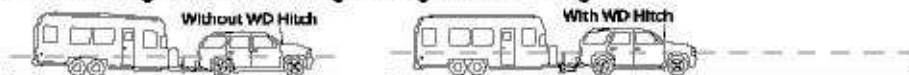


Weight Carrying / WC

The total weight of both the trailer and the cargo inside. Never exceed the weight capacity of your trailer hitch.

Weight Distribution / WD

Used to balance the weight of the cargo between the front and rear wheels throughout the trailer, allowing for better steering, braking, and level riding.



Sway Control

A device used to reduce the lateral movements of the trailer that are caused by the wind. This works in conjunction with a weight distribution hitch. Do not use this on a class 1 or 2 hitch, or with surge brakes.

How Much Can You Safely Tow?

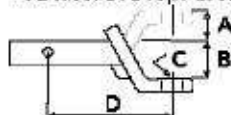
TONGUE WEIGHT (lb.)	CLASS 1	CLASS 2	CLASS 3	CLASS 4	CLASS 5	CLASS 6	CLASS 7	CLASS 8	CLASS 9	CLASS 10
Tongue weight should be about 10 to 15 percent of the gross trailer weight.										
TRAILER TYPE										
Coupler										
1st	1100	1200	1300	1400	1500	1600				
2nd										
3rd										
4th										
5th										
6th										
7th										
8th										
9th										
10th										
11th										
12th										
13th										
14th										
15th										
16th										
17th										
18th										
19th										
20th										
21st										
22nd										
23rd										
24th										
25th										
26th										
27th										
28th										
29th										
30th										
31st										
32nd										
33rd										
34th										
35th										
36th										
37th										
38th										
39th										
40th										
41st										
42nd										
43rd										
44th										
45th										
46th										
47th										
48th										
49th										
50th										
51st										
52nd										
53rd										
54th										
55th										
56th										
57th										
58th										
59th										
60th										
61st										
62nd										
63rd										
64th										
65th										
66th										
67th										
68th										
69th										
70th										
71st										
72nd										
73rd										
74th										
75th										
76th										
77th										
78th										
79th										
80th										
81st										
82nd										
83rd										
84th										
85th										
86th										
87th										
88th										
89th										
90th										
91st										
92nd										
93rd										
94th										
95th										
96th										
97th										
98th										
99th										
100th										

Refer to owner's manual for towing capabilities and limitations.

Ball Mount

The ball mount is placed inside the opening of the receiver hitch which is mounted to the vehicle. Make sure a hitch pin and clip is properly securing the ball mount to the receiver hitch before you begin towing.

• A: Rise, B: Drop, C: Hole Size, D: Length.

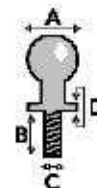


Trailer Ball

The connection from the hitch to the trailer. There are many factors that determine the correct hitch ball:

- Number one is the hitch ball's gross trailer weight rating.
- The mounting platform must be at least 3/8" thick.
- The hole diameter must not be more than 1/16" larger than the threaded shank.
- Every time you tow, check the nut and lock washer to make sure they are fastened securely.

• A: Ball Dia. B: Shank Length, C: Shank Dia. D: Shank Rise.



Coupler

The component that is placed over the trailer ball to connect the vehicle to the trailer. Be sure that the coupler size matches the size of the hitch ball and that the coupler handle is securely fastened. To determine what size hitch ball you need for your application you will need to know the size of coupler that is on the trailer. Be sure your coupler is properly adjusted to the ball you are using.

NOTE: For added security the use of safety devices such as Coupler Safety Pins and Locks is strongly recommended.

Safety Chains

Safety chains are a requirement and should be crossed under the tongue of the trailer so that the tongue will not drop to the road if it becomes separated from the hitch. Always leave enough slack so you can turn. Never allow the safety chains to drag on the ground and never attach the chains to the bumper.

Trailer Classification: Safety Chain Breaking Force - Minimum

Class 1: 2,000 lbs. (8.9 kN)

Class 2: 3,500 lbs. (15.6 kN)

Class 3: 5,000 lbs. (22.2 kN)

The strength rating of each length of safety chain or its equivalent and its attachments shall be equal to or exceed in minimum breaking force the GVWR (Gross Vehicle Weight Rating) of the trailer.

Electrical

Trailer lights, Electric Brakes, Break-away systems - Every time you tow, be sure to check that all components are working properly.

Wiring identification by color:

7-WAY						
6-WAY						
5-WAY						
4-WAY						
GREEN	YELLOW	BROWN	WHITE	RED	BLUE	PURPLE
RIGHT TURN & BRAKE	LEFT TURN & BRAKE	TAILLIGHTS	GROUND	AUXILIARY POWER	ELECTRIC BRAKES	BACK-UP LIGHTS

CURT DISCLAIMER: WIRING COLOR SHOWN WORK IN CONJUNCTION WITH CURT MANUFACTURING PRODUCTS.

13269

JEEP RENEGADE

1/18/2016

GROSS LOAD CAPACITY WHEN USED AS A WEIGHT CARRYING HITCH: 3,500 LBS. TRAILER WEIGHT & 525 LBS. TONGUE WEIGHT.

WARNING: ALL NON-TRAILER LOADS APPLIED TO THIS PRODUCT MUST BE SUPPORTED BY 18050 STABILIZING STRAPS.



WARNING: ** FAILURE TO PROPERLY SUPPORT NON-TRAILER LOADS WILL VOID PRODUCT WARRANTY **

WARNING: * DO NOT EXCEED VEHICLE MANUFACTURER'S RECOMMENDED TOWING CAPACITY *****

FOR MORE INFORMATION LOG ONTO WWW.CURTMFG.COM & FOR HELPFUL TOWING TIPS LOG ONTO WWW.HITCHINFO.COM
HAVING INSTALLATION QUESTIONS? CALL TECHNICAL SUPPORT AT 1-800-798-0813



Parts List			
ITEM	QTY	PART NUMBER	DESCRIPTION
1	6	1_2 FISHWIRE	1/2" FISHWIRE
2	6	HFN 1213, GR8	HEX FLANGE NUT
3	6	1/2-13 x 1 3/4, GR8	CARRIAGE BOLT
4	8	CM-SP10	.250 x 1.00 x 2.50" SQUARE HOLE SPACER

REVERSE PULL FISHWIRE TECHNIQUE

ATTACH FISHWIRE TO CARRIAGE BOLT AND SLIDE SPACER ONTO FISHWIRE. PUSH THE BOLT THRU THE HOLE FOLLOWED BY THE SPACER (AS SHOWN). PULL BOLT BACK INTO POSITION, PROTRUDING FROM THE FRAME.

FISHWIRE TECHNIQUE

INSERT COILED END OF FISHWIRE TOOL THROUGH HITCH MOUNTING HOLE IN VEHICLE FRAME RAIL AND OUT THE ACCESS HOLE. PASS COILED END OF FISHWIRE THROUGH SPACER AND THREAD BOLT INTO COIL. KINK WIRE TO KEEP SPACER SEPARATE FROM BOLT AS SHOWN. PULL FISHWIRE, SPACER, AND BOLT THROUGH FRAME AND OUT MOUNTING HOLE. USE FISHWIRE TO GUIDE HITCH DURING MOUNTING AND PREVENT LOSS OF BOLT / SPACER INSIDE FRAME RAIL.

NOTE: SOME VEHICLES MAY FISHWIRE THROUGH END OF FRAME

HOLE ENLARGEMENT DIAGRAM

Ø 1.125 in

TOOLS REQUIRED
RATCHET
TORQUE WRENCH
3/4" SOCKET
21mm SOCKET
8" EXTENSION
DIE GRINDER
UTILITY KNIFE
OFFSET SCREWDRIVER
UNIVERSAL JOINT SOCKET
SAFETY GLASSES

HITCH WEIGHT: 37 LBS.

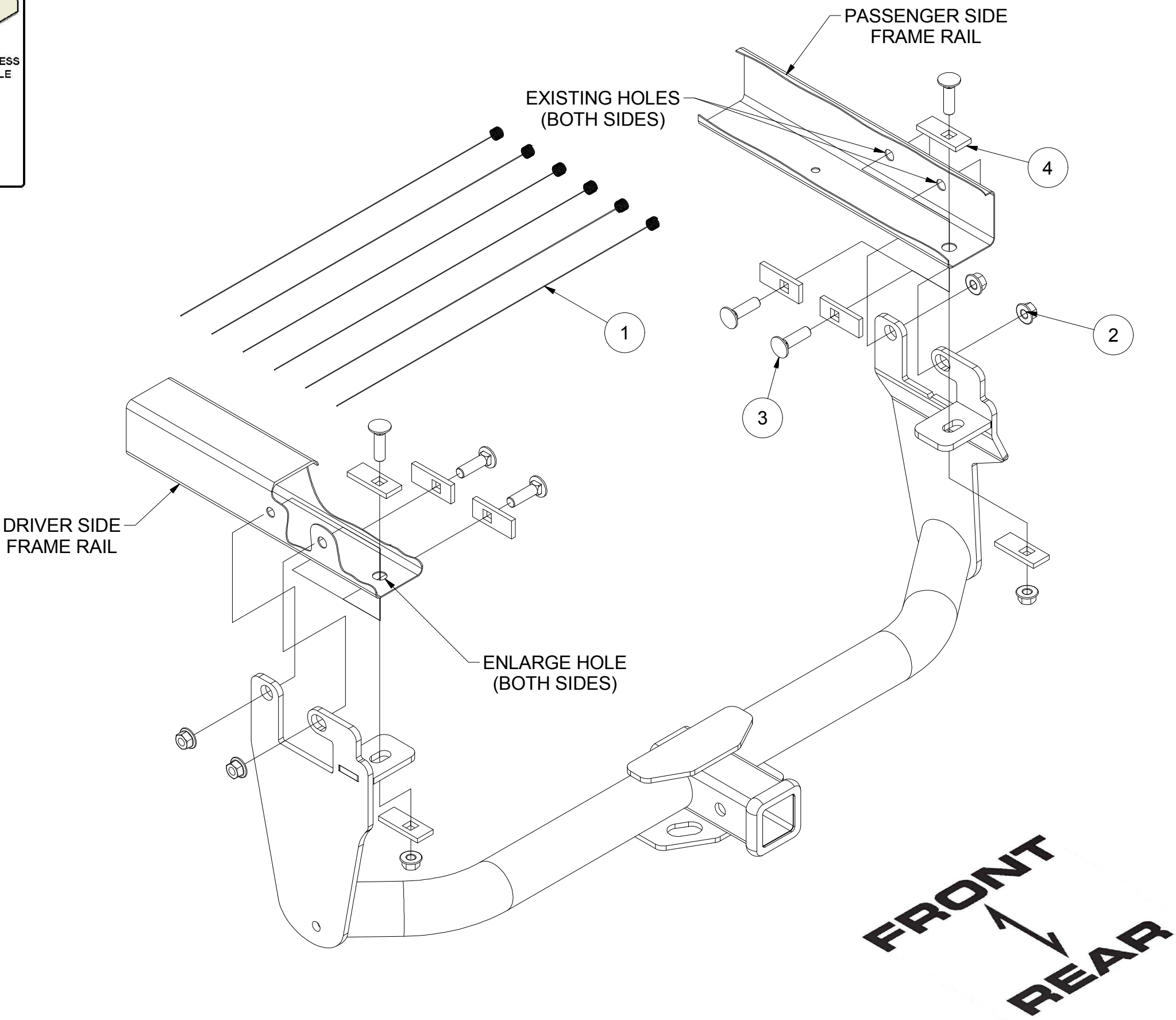
INSTALL TIME

PROFESSIONAL: 30 MINUTES

NOVICE (DIY): 60 MINUTES

INSTALL NOTES:

- HOLE ENLARGEMENT REQUIRED
- FISHWIRE HARDWARE
- REVERSE FISHWIRE HARDWARE
- WELDNUT CLEANING
- NO DRILL



INSTALLATION STEPS

1. Remove (1) rubber plug on the bottom of each frame rail. Remove (2) rubber plugs on the outside of each frame rail. **Trailhawk Models:** Remove (3) M14 bolts on each frame rail using a 21mm socket and save for reinstallation. Skip to step 5.
2. Enlarge the rearmost hole with a die grinder on each frame rail to allow the carriage bolts and spacers to be inserted into the frame rail. (See Hole Enlargement Diagram.)
3. Clear away caulk as necessary near mounting holes using a utility knife. On the passenger side, remove (2) plastic screws retaining an access panel located in the wheel well using an offset phillips screwdriver. Save for reinstallation. **Note:** Removal of rear wheels may ease installation.
4. Fishwire (2) 1/2" carriage bolts and (2) CM-SP10's into the holes on the outside of each frame rail (See Fishwire Technique Diagram). Reverse Fishwire (1) 1/2" carriage bolt and (1) CM-SP10 into the hole on the bottom of each frame rail. Keep fishwires attached until hitch is raised into position (See Reverse Technique Diagram.)
5. Raise the hitch into position, thread the fishwire into the mounting holes. On the bottom attachments, place a CM-SP10 spacer on the bolt and loosely install all 1/2" flange nuts using a 3/4" socket. **Trailhawk Models:** Raise hitch and loosely install factory M14 hardware removed in Step 1.
6. Torque all 1/2" hardware to 110 ft.-lbs or M14 hardware to 135 ft.-lbs. Reinstall access panel and plastic screws removed in Step 3.



Scan for more information

PERIODICALLY CHECK THIS RECEIVER HITCH TO ENSURE THAT ALL FASTENERS ARE TIGHT AND THAT ALL STRUCTURAL COMPONENTS ARE SOUND.

CURT Manufacturing LLC., warrants this product to be free of defects in material and/or workmanship at the time of retail purchase by the original purchaser. If the product is found to be defective, CURT Manufacturing LLC., may repair or replace the product, at their option, when the product is returned, prepaid, with proof of purchase. Alteration to, misuse of, or improper installation of this product voids the warranty. CURT Manufacturing LLC.'s liability is limited to repair or replacement of products found to be defective, and specifically excludes liability for incidental or consequential loss or damage.

This product complies with safety specifications and requirements for connecting devices and towing systems of the state of New York, V.E.S.C.Regulation V-5 and SAE J684.