



## Free Flow Exhaust Installation Instructions

**PART NUMBER  
D660-0051(-BLK)**

APPLICATION: 2011-16 535i & xDrive (F10)

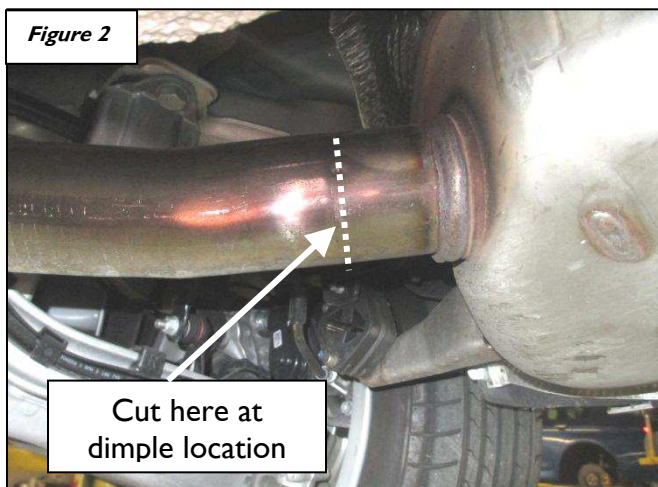
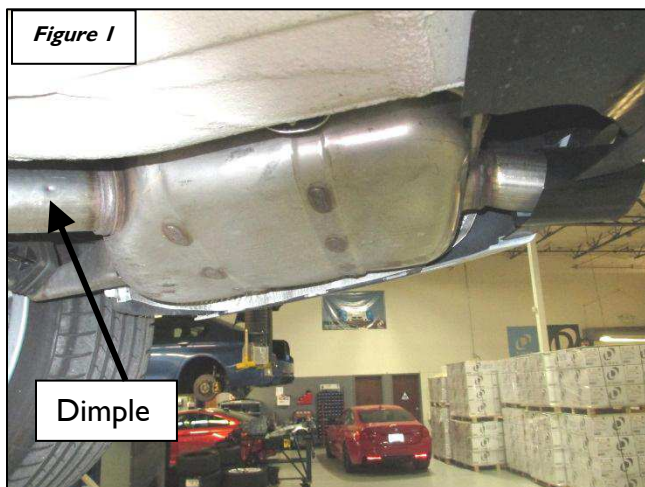
---

Thank you for purchasing a Dinan High Performance Muffler! Some mechanical skill is required to install this muffler. If you are not familiar with this procedure, we strongly recommend that you arrange for a qualified BMW repair facility to perform this installation.

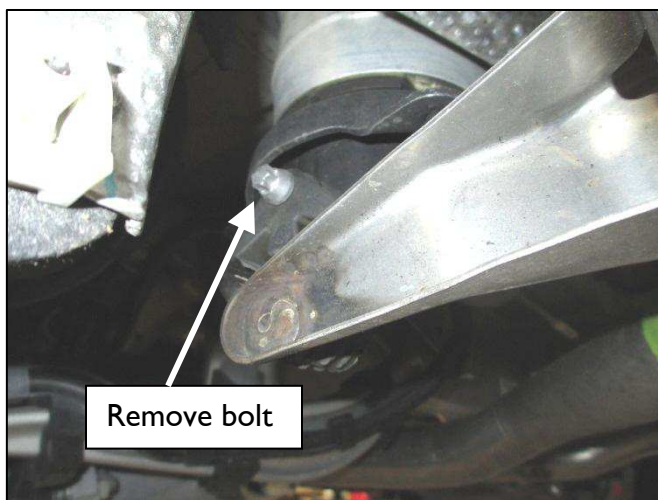
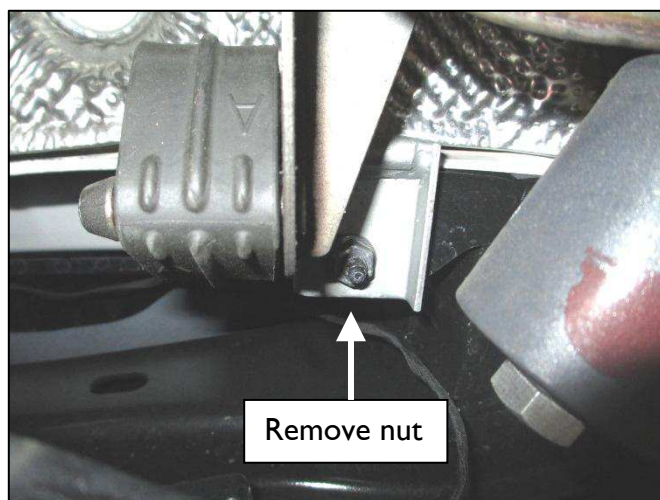
### **INSTALLATION:**



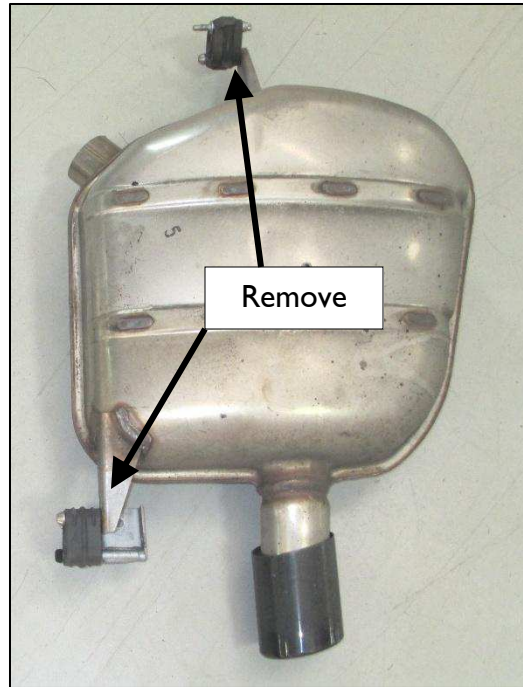
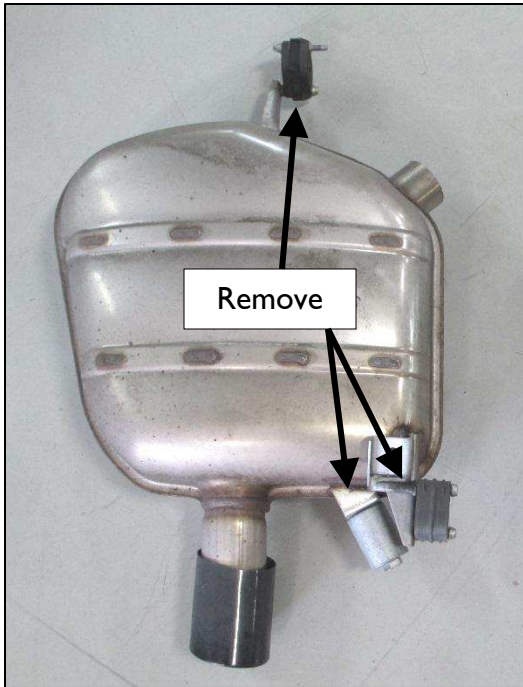
1. Support the muffler securely with a jack or a stand, locate the dimple on the stock pipe then cut the stock muffler as shown in **Figures 1 & 2**. Before cutting the stock muffler, hold DINAN muffler underneath stock muffler to verify the stock pipe will not be cut too short!



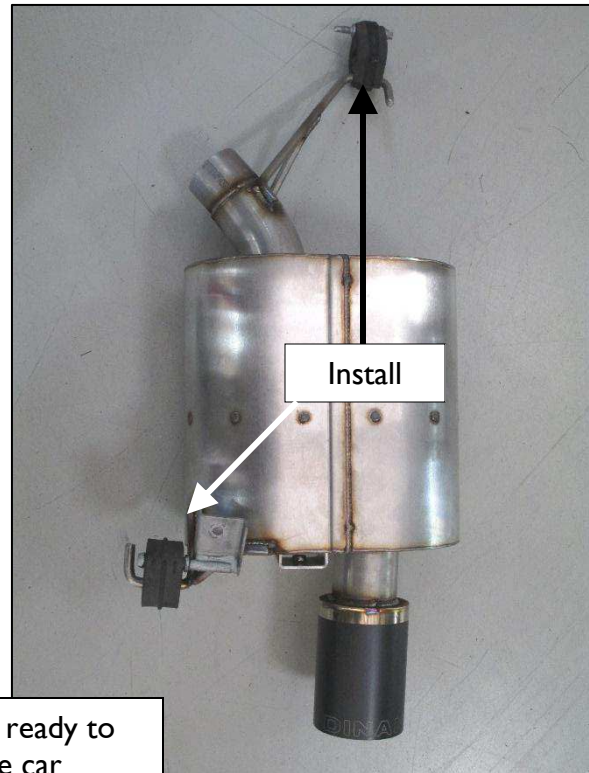
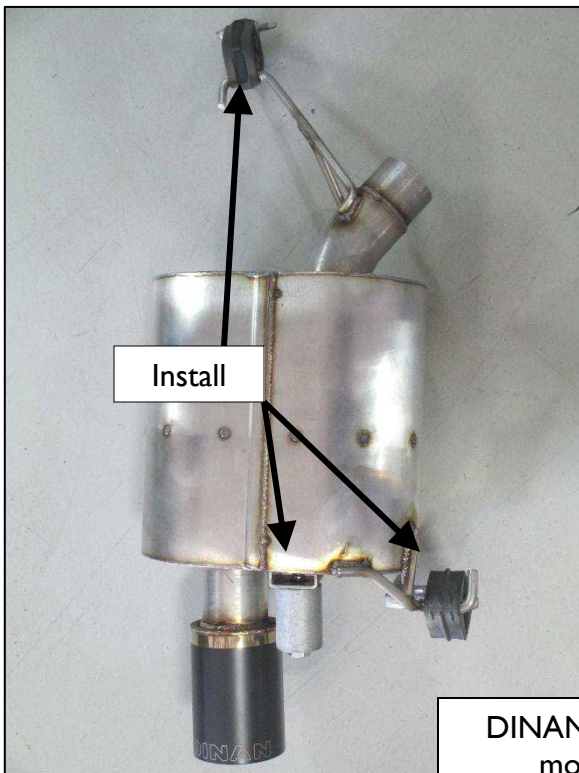
2. With one of the mufflers fully secured and supported on a jack or stand, remove the rear hanger nut and the front hanger bolt as shown. Repeat this step for the other muffler (**SAVE THESE PARTS FOR INSTALLATION OF DINAN MUFFLER!**)



3. Remove the rubber hangers and the weight from the stock mufflers. **(SAVE THE MOUNT, MOUNTING BOLT AND RUBBER HANGERS FOR INSTALLATION OF THE DINAN MUFFLER!)**



4. Install rubber hangers and stock weight onto DINAN mufflers as shown.

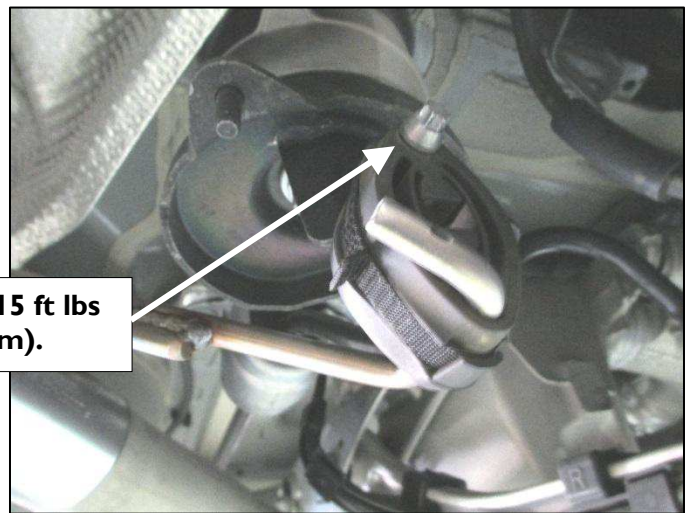
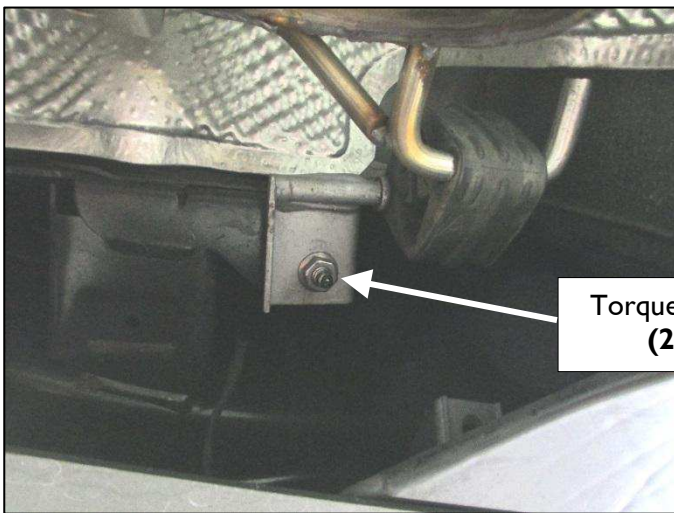


DINAN mufflers ready to mount on the car

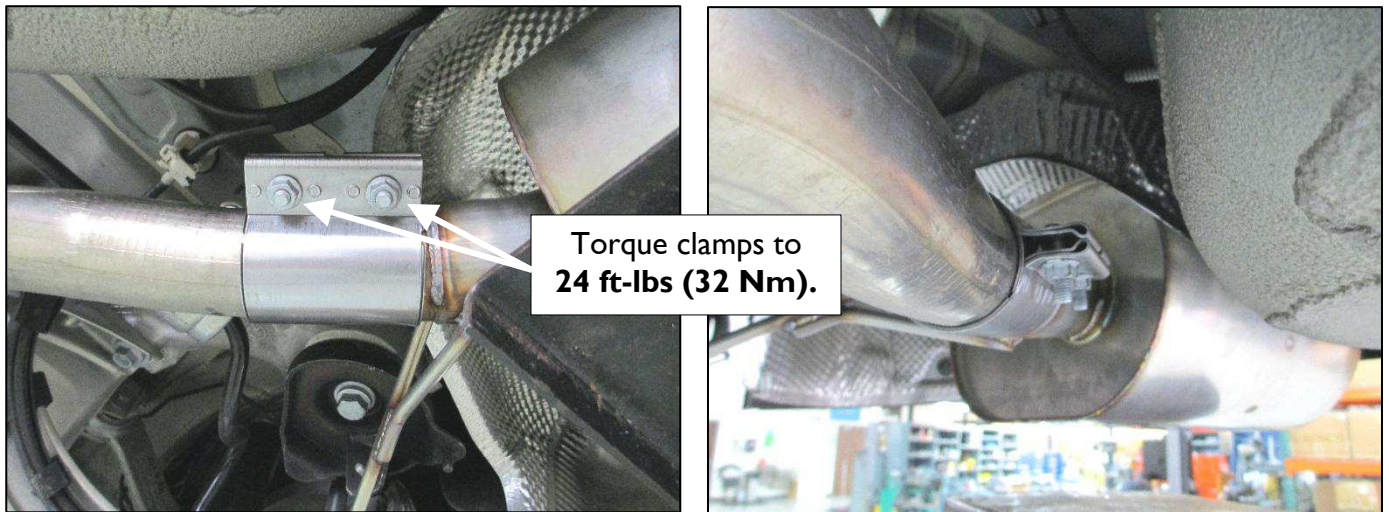
5. Place exhaust clamps provided in the hardware kit onto the ends of the stock exhaust pipes. With one of the DINAN mufflers secured on a jack or stand, put the muffler in place. When mounting the muffler it should be held with the tips up near the bumper and the muffler pushed forward against the ends of the stock pipes.



6. With muffler held in place, tighten front and rear hangers, torque to **15 ft-lbs (21 Nm)**.



7. With the muffler held in place, torque clamps to **24 ft-lbs (32 Nm)**. Repeat steps 6-8 for the other DINAN muffler.



8. Use the stock cross brace located in front of the mufflers for additional adjustment.



9. The exhaust tip should be centered in the opening in the bumper. Check for proper bumper clearance and alignment using **Figures 3 & 4**.



Enjoy your new DINAN exhaust!