



Installation Instructions

717920

2015-2019 DODGE CHALLENGER SRT
6.2L, 6.4L ENGINE
COUPE

OVERVIEW:

1. Please take a moment to read and understand these instructions before installing your Flowmaster performance system.

NOTE: Please inventory all parts before starting the installation process and call our tech line to report any missing parts. This will help avoid potentially stranding your vehicle until any missing replacement parts arrive.

ITM #	PART #	DESCRIPTION	QTY.
1	26522M	Scavenger Pipe Assembly	1
2	71229-Z	FFX Muffler	2
3	26626M	Right Tailpipe	1
4	26628M	Left Tailpipe	1
N/A	PK839	Hardware Pack includes:	1
5	MC234BS	2 $\frac{3}{4}$ " Stainless Band Clamp	2
6	MC300BS	3" Stainless Band Clamp	4
7	HW502	$\frac{7}{16}$ " Hanger Keeper	2
8	HW512	#10-32 x $\frac{1}{2}$ " HEX THRD Standoff	6
9	HW243	#10-32 X $\frac{1}{4}$ " Button Head Screw	6
10	HW240	#10-32 X $\frac{3}{4}$ " Button Head Screw	6
11	HW315	#10 SM OD Flat Washer	6

REMOVE STOCK EXHAUST SYSTEM:

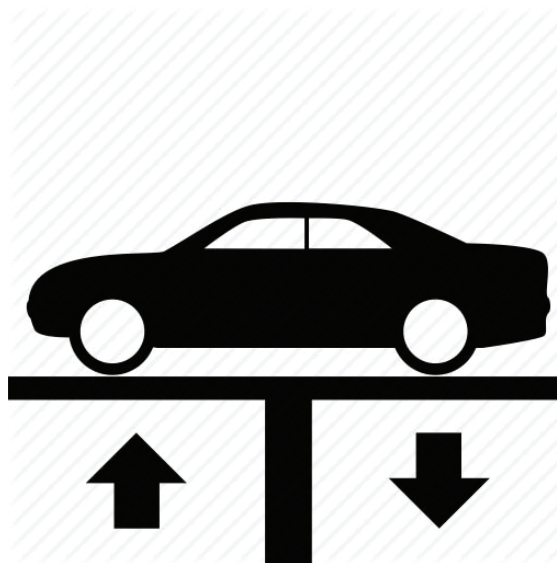
2. Raise vehicle up on a hoist or rack to working height. If you don't have access to a hoist or rack, support vehicle with jack stands.

WARNING:

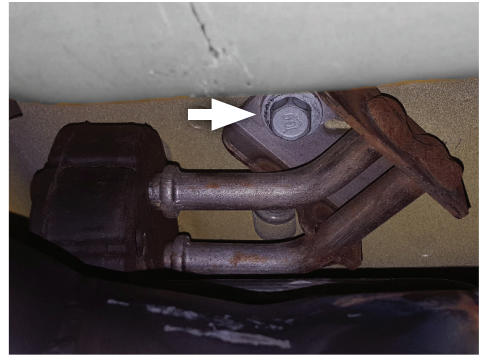
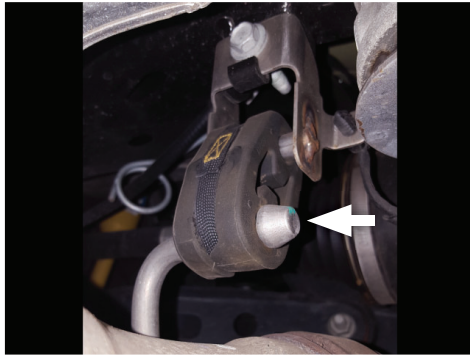
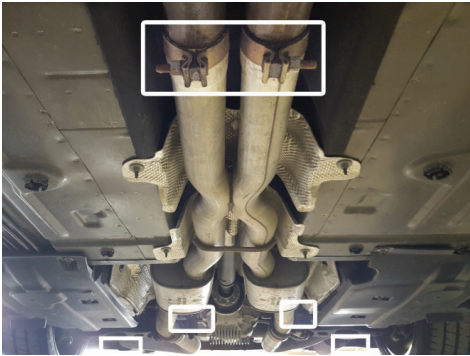
Avoid serious burns! Allow your vehicle time to cool completely before touching any factory engine components.

To ease disassembly of factory components:

- Apply penetrating lubricant to mounts, bolts and clamps before you remove them.
- Use stands as necessary to support parts as you detach them from your vehicle.



3. Support exhaust with stands then loosen clamps securing exhaust to catalytic converters. Dismount wire hangers (x2) from rubber isolators near exhaust valve actuators. Remove and retain rear hangers and bolts.



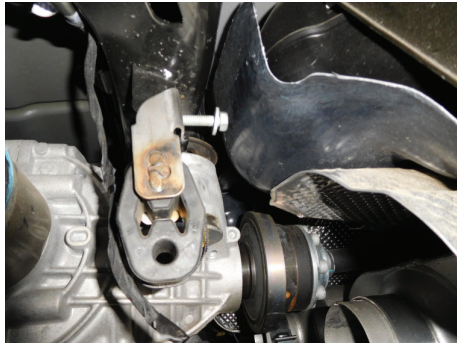
4. Carefully lower stands at vehicle rear and with help from an assistant, slide system back off the head pipes and lower system from vehicle.



5. Remove nuts (x3) securing actuator to mounts on tailpipes. Then remove actuator and spring from mount on each tailpipe.



6. Locate factory exhaust mounts (x2) just forward of rear differential. Remove bolt securing hanger to frame, then lift hanger slightly to clear locating slot and rotate it 180 degrees. Lower hanger back into locating slot then install bolt.



INSTALL FLOWMASTER EXHAUST SYSTEM

7. Remove nuts from stock and Flowmaster clamps, apply anti-seize compound to bolts and re-install nuts.

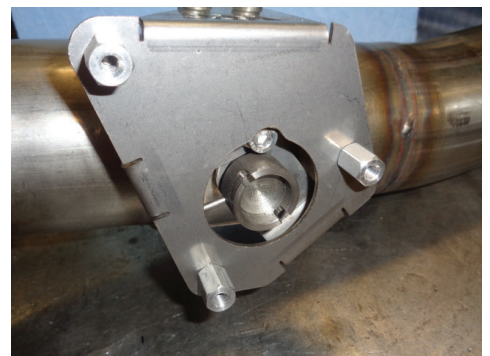
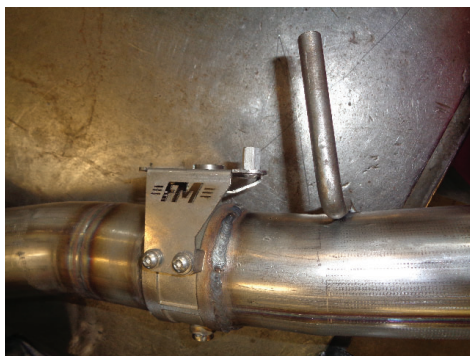
NOTE: The image in this step is intended for illustrative purposes only and may or may not accurately reflect components included in your kit.

8. Every slip fit connection in this kit must seat 3" deep except for muffler connections which must seat 2" deep. Mark all slip fit components in your kit and mark them accordingly so your Flowmaster exhaust system fits properly onto your vehicle.



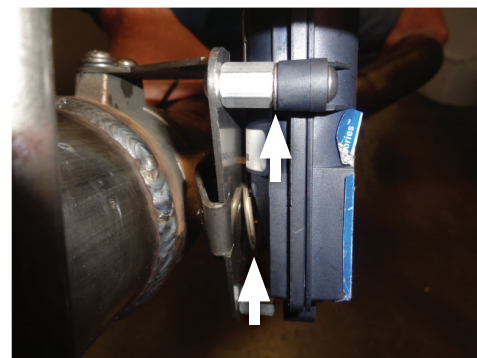
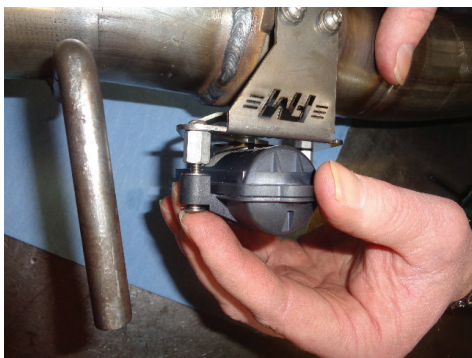
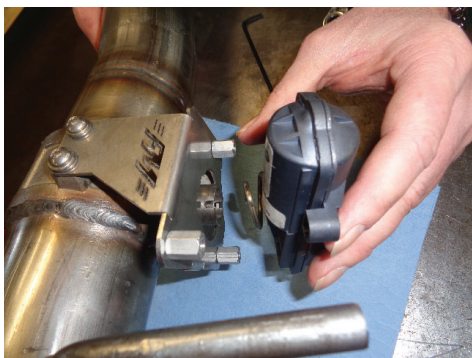
9. Install **screws (x3) (9)** through mounting bracket into **standoffs (x3) (8)** as shown. Complete step for both tailpipe assemblies.

NOTE: For more help, navigate to our Flowmaster Inc. YouTube channel, then search for and watch "Flowmaster Dodge Actuator Install" video. Leave a like and subscribe to the channel for access to all our latest uploads.



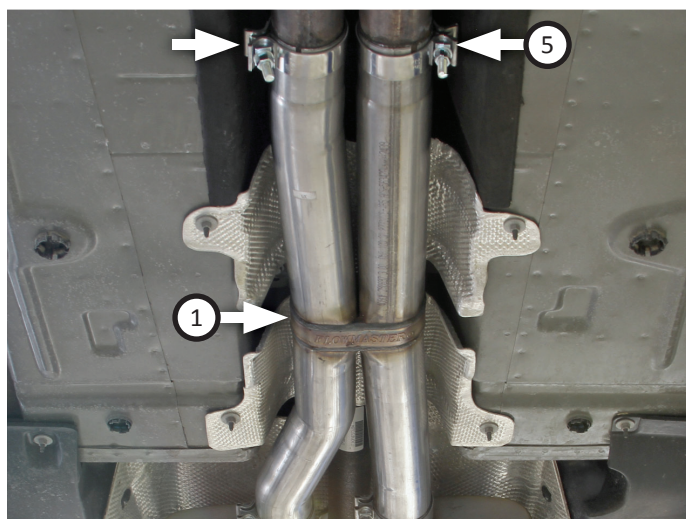
10. Insert **screws (x3) (10)** through actuator and **flat washers (x3) (11)**. Place actuator onto tailpipe valve mount then tighten screws to fasten assembly. Complete step for both tailpipe assemblies.

CAUTION: Make sure you place flat washer between actuator and standoff as shown, **NOT** beside screw head. Also, make sure the actuator spring is properly aligned between actuator and valve.

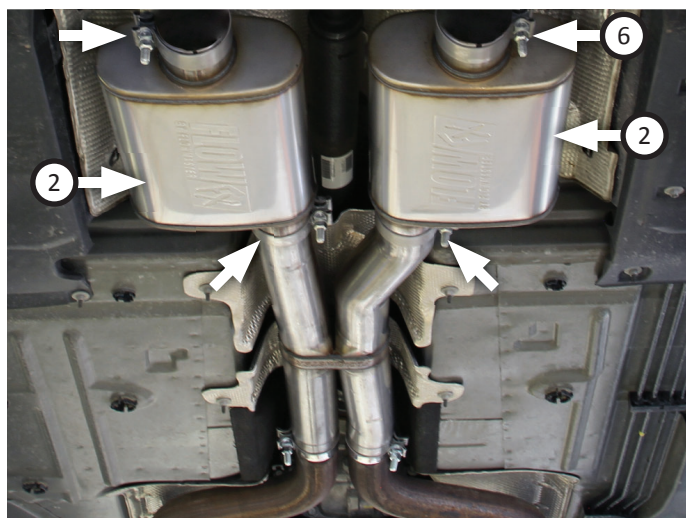


NOTE: Offset outlet pipe should be oriented to passenger side during install.

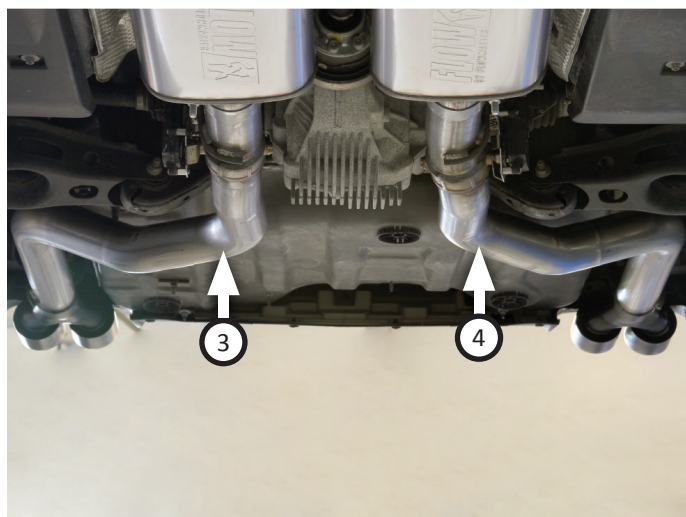
11. Place **clamps (x2) (5)** onto **scavenger pipe (1)** inlet then fit pipe onto factory head pipes about 2". Level and center assembly in drive line tunnel and support with a stand. Tighten clamps just enough to allow for adjustment.



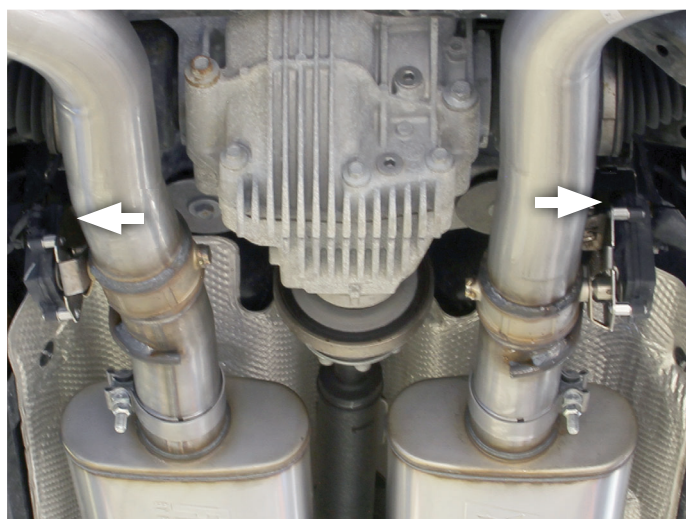
12. Place **clamps (x4) (6)** onto **FFX mufflers (x2) (2)** then connect it to scavenger pipe. Level parts then tighten clamps just enough to allow for adjustment.



13. Transfer hangers from step 3 onto **right and left tailpipes (3, 4)**. Connect them to mufflers, insert wire hangers (x2) into rubber isolators then rebolt rear hanger mounts to frame. Adjust tailpipes so their tips are level and centered in bumper cut-outs and tighten clamps just enough to allow for adjustment.



14. Reconnect exhaust valve actuators (x2) as shown.
15. Adjust exhaust system to provide a satisfactory fit. Maintain a minimum of ½" clearance around all exhaust components, keeping in mind suspension, travel and vibration. Then securely tighten clamps.
16. Slide **hanger keepers (x2) (7)** onto sideways hanger ends to prevent components from slipping their rubber mounts.
17. We recommend applying a one inch tack weld to all slip-fit connections to secure them. You may also apply high temperature paint over welded areas to prevent rust and premature corrosion.



Congratulations, the installation of your FLOWMASTER performance exhaust system is now complete!





Installation Instructions

717920

**2015-2019 DODGE CHALLENGER SRT
6.2L, 6.4L ENGINE
COUPE**

